

# POWERS' RATINGS

Volume 3 Issue 11

Week Eleven Issue

© 2025 BP Sports, LLC

## Powers' Ratings Computer Plays in CFB 506-441-14 (53.4%) All-Time 2016-2024!!!

### Week 10 News and Notes!

For those of you that are new, in this section we'll recap what happened last week specifically, the misleading finals, the key injuries, the bad beats and the line moves. We'll include most of these recaps here, therefore you don't have to waste time reading about them in my game-by-game write-ups for the upcoming week. Without further adieu, here's a run down of what happened last week in the world of CFB.

#### Week 10 Trends

	<b>Favorites-Dogs</b>
Straight Up	35-17
ATS	26-26
	<b>Home-Away</b>
Straight Up	25-26
ATS	23-28
	<b>Totals (O/U)</b>
Over-Under	25-27
	<b>Season To-Date</b>
	<b>Favorites-Dogs</b>
Straight Up	499-137
ATS	321-302-13
	<b>Home-Away</b>
Straight Up	427-202
ATS	326-290-13
	<b>Totals (O/U)</b>
Over-Under	322-309-5

#### Largest Favorites to Cover:

Indiana (-21.5) at Maryland, 55-10  
Ohio State (-17.5) vs Penn State, 38-14  
Old Dominion (-17) at UL-Monroe, 31-6

#### Biggest Money line Upsets:

Fresno State +657 won 30-7 at Boise State (+17.5)  
West Virginia +429 won 45-35 at Houston (+13.5)  
Kentucky +339 won 10-3 at Auburn (+12)  
SMU +263 won 26-20 in OT vs Miami, FL (+9)

#### ATS Notables With Margins Per Game:

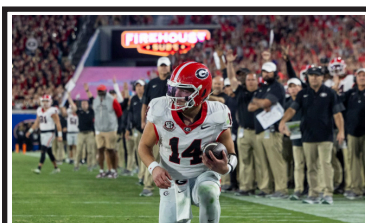
<b>7-0-1 ATS teams with cover margin:</b>	<b>7-2 teams to the OVER with margin:</b>
Ohio State 8.0	Tennessee 15.4
<b>8-1 ATS teams with cover margin:</b>	Temple 7.6
Texas Tech 7.9	Pittsburgh 7.3
Memphis 6.3	Arkansas 6.8
Mississippi State 5.6	<b>7-1 teams to the UNDER with margin:</b>
<b>7-1 ATS teams with cover margin:</b>	Missouri State 5.6
San Diego State 15.0	<b>7-2 teams to the UNDER with margin:</b>
<b>7-2 ATS teams with cover margin:</b>	Auburn 10.6
Utah 11.1	Wyoming 8.6
North Texas 9.2	Arkansas State 8.2
Vanderbilt 9.1	Rutgers 7.4
Pittsburgh 7.9	Oklahoma 7.1
Western Kentucky 1.8	SMU 5.6
<b>1-7 ATS teams with non-cover margin:</b>	Arizona State 4.7
Sam Houston State -12.9	Purdue 3.4
Georgia State -10.4	<b>6-2 teams to the UNDER with margin:</b>
Penn State -10.3	Army 2.5
<b>2-7 ATS teams with non-cover margin:</b>	Florida 7.9
UL-Monroe -10.8	James Madison 0.8
Oklahoma State -8.6	Nevada 8.8
Virginia Tech -6.8	North Carolina 7.1
Baylor -3.5	Northern Illinois 8.5
Texas -2.9	Wisconsin 6.3
Stanford 2.2	

#### Misleading Finals and Blown Leads

**Kennesaw State (-12) beat UTEP 33-20.** Kennesaw got a fumble-return for a TD, a punt return for a TD, a safety and scored a TD with 1:10 left to get the cover.

**Coastal Carolina (+6.5) upset Marshall 44-27.** However, Marshall had a 432-410 yard edge. Marshall led 27-17 but were -3 in turnovers.

**Oklahoma (+3) upset Tennessee 33-27.** However, Tennessee had a 456-351 yard edge. Oklahoma got a long fumble return TD. Tennessee had three turnovers and also missed a FG while Oklahoma made a pair of 50-plus FG's.



Georgia QB Gunner Stockton took a knee instead of scoring a TD in Georgia's 24-20 win over Florida last Saturday. The Bulldogs were 7-point favorites. While UGA backers would have loved a TD there, Florida was the right side in the game and deserved the cover.

**Army (-1.5) beat Air Force 20-17.** However, Air Force had a 335-295 yard edge. Air Force was intercepted at the Army-18, fumbled at the Army-11, missed a FG, were -3 in turnovers and Army got a 40-yard completion in the final seconds to set up the game-winning FG.

**Minnesota (-4.5) beat Michigan State 23-20 in overtime.** Michigan State had a 467-301 yard edge. MSU missed a couple of short FG's.

#### Bad Beats

**Texas (-3.5) beat Vanderbilt 34-31.** Texas led 34-10 entering the 4Q. Vandy got a TD to make it 34-16. Texas missed a FG with under 5 minutes left. Vanderbilt got a long TD on a busted coverage and then converted the 2-point attempt on a controversial review. Backed up on their own goal line, Vandy converted a 4th & 19 en route to scoring a TD with :33 left for the back door. Note Texas was as low as -1.5 during the week.

**Virginia (-5.5) beat California 31-21.** Virginia got a "Pick 6" with :34 left to get the cover.

**The Pittsburgh/Stanford total was 51.5.** Stanford went 97 yards in 11 plays getting a TD pass with :18 left to put the game over.

#### Injuries/Personnel News

-Auburn had fired head coach Hugh Freeze. He's gone 6-16 in the SEC over his three seasons and 15-19 overall. DC DJ Durkin will be the interim coach.

-Nebraska QB Dylan Raiola is out for the year with a broken fibula that he suffered vs USC last Saturday. TJ Lateef will get the start at UCLA this week.

-BYU RB LJ Martin is expected to play this week. He practiced well on Monday and leads BYU with 789 rushing yards.

-True freshman Missouri QB Matt Zollers will start vs Texas A&M this week.

-Indiana WR Elijah Sarratt is day-to-day as he works through a hamstring injury.

-Bowling Green has fired offensive coordinator Travis Partridge.

-Three Bowling Green players were arrested on Sunday and charged with assault. WR's Brennan Ridley and Caleb Goodloe and FB Leo Kemp.

-Louisville RB Isaac Brown will be out for awhile according to Jeff Brohm. He has 782 rushing yards this year.

-Florida WR Dallas Wilson is done for the season. He only played in four games this year so he'll be able to redshirt and have four years of eligibility remaining.

-Boise State QB Maddux Madsen was carted off the field in the loss to Fresno State. He's expected to be out awhile.

-Colorado true freshman QB Julian Lewis will get the start at West Virginia.

-Stanford QB Elijah Brown will get the start at North Carolina.

-Purdue RB Devin Mockobee (ankle) is out for the season.

-Michigan RB Justice Haynes (ankle) is out indefinitely.

-Oregon State QB Gabarri Johnson (foot) is questionable this week.

#### Brad Powers' Radio/TV/Podcast Weekly Schedule This Fall

Per my new contracts with Covers and Hammer Betting Network (Hit the Books), I'm not doing as many shows this year.

Mon 12:00pm ET. Early best bets with Joe Osborne @Covers on Twitter/YouTube

Mon 5:00pm ET. Weekend recap with Joey Knish @HitTheBooks on YouTube

Thu 12:00pm ET. Big game bets with Joe Osborne @Covers on Twitter/YouTube.

Fri 9:00am ET. Weekend preview on Bill King show @NashSportsRadio

Fri 5:00pm ET. Weekend preview with Joey Knish @HitTheBooks on YouTube.

Sat:1:30pm ET. Halftime show of Big Noon Kickoff with with Joey Knish @HitTheBooks on YouTube.

@ indicates the Twitter handle.

#### Recapping Week 10 Best Bets

Our power ratings plays went 1-1 in week 10. Those are the plays that are 3 points or more off the Vegas lines. They have not done well the last three years and we're debating using them next year. VIP customers are 42-39-1 on top plays and 137-127-2 overall so far this season (see below).

#### VIP Records:

CFB Plays: 27-29-1 -6.08 units

CFB Leans: 49-44

NFL Plays: 15-10 +3.95 units

NFL Regular Season Leans: 42-44-1, NFL Preseason Leans: 4-0

# CFB and NFL Schedules with Vegas and Brad Powers Lines Week 11 Nov 5th-Nov 10th

<b>Wednesday, Nov 5th</b>					<b>Saturday, November 8th</b>				
105 Kent State	7:00	45.5	47.5	46	167 Auburn	4:00	46.5	45.5	47
106 Ball State	ESPNU	-2	-3	-4	168 Vanderbilt	SECN	-7	-6.5	-7
107 Northern Illinois	7:00	41.5	42	42	169 LSU	7:30	49.5	49.5	50
108 Toledo	ESPN2	-15	-14.5	-14	170 Alabama	ABC	-11	-10	-10
<b>Thursday, Nov 6th</b>					171 Texas State	5:00	-2.5	-2.5	-2
109 Las Vegas	8:15	42.5	42.5	40	172 UL-Lafayette	ESPN+	63	63.5	60
110 Denver	Prime	-9.5	-9	-10	173 Oregon	3:30	-6	-6	-8
111 UTSA	7:30	69	68	66	174 Iowa	CBS	44.5	41	44
112 South Florida	ESPN	-13.5	-13.5	-12	175 Washington	4:30	-11	-11.5	-11
113 Georgia Southern	7:30	62	61.5	60	176 Wisconsin	BTN	45.5	45	45
114 Appalachian State	ESPN2	-6	-5.5	-4	177 UNLV	9:30	-6	-4.5	-6
<b>Friday, November 7th</b>					178 Colorado State	FS1	62	62	58
115 Houston	8:00	46	-1	49	179 Kansas	3:30	56.5	56	54
116 Central Florida	FS1	-1	47.5	-1	180 Arizona	ESPN2	-6	-4.5	-4
117 Tulane	9:00	55.5	54	56	181 Louisiana Tech	3:00	-4.5	-5.5	-3
118 Memphis	ESPN	-7	-3.5	-4	182 Delaware	ESPN+	58	56.5	55
119 Northwestern	9:00	51.5	50.5	50	183 FIU	3:00	-1	-1	-1
120 USC	FOX	-15	-14	-14	184 Middle Tennessee	ESPN+	53	51.5	51
<b>Saturday, November 8th</b>					185 Jacksonville State	3:00	-1.5	-1	51
121 Charlotte	3:00	55.5	57	55	186 UTEP	ESPN+	49	49	-1
122 East Carolina	ESPN+	-28.5	-28.5	-27	187 Air Force	6:00	65	67	64
123 Tulsa	3:00	66	64.5	60	188 San Jose State	FS1	-4	-4.5	-4
124 Florida Atlantic	ESPN+	-5	-3.5	-4	189 Nebraska	9:00	-1.5	43.5	-1
125 Florida	7:30	-3.5	-3	-4	190 UCLA	FOX	44.5	-1.5	47
126 Kentucky	SECN	45.5	44	44	191 Duke	3:30	-8.5	-9.5	-9
127 Temple	12:00	47.5	46.5	48	192 Connecticut	CBSSN	65.5	65.5	61
128 Army	CBSSN	-6.5	-6.5	-6	193 Southern Miss	12:00	-5	-4.5	-3
129 James Madison	12:00	-12	-13.5	-13	194 Arkansas State	ESPN	59.5	56	55
130 Marshall	ESPN2	57.5	55	57	195 Kennesaw State	4:00	-6.5	-9	-9
131 Georgia State	4:00	57	57.5	57	196 New Mexico State	ESPN+	53.5	52.5	49
132 Coastal Carolina	ESPN+	-8	-7.5	-5	197 Nevada	7:30	52.5	53	52
133 Colorado	12:00	57	54.5	52	198 Utah State	CBSSN	-11	-9	-10
134 West Virginia	TNT	-6	-6.5	-4	199 Navy	7:30	56.5	56	59
135 SMU	12:00	-11	-10.5	-11	200 Notre Dame	NBC	-26	-26.5	-25
136 Boston College	ACCN	55	55	53	201 Sam Houston State	10:00	51.5	52.5	52
137 Florida State	7:00	55.5	56	56	202 Oregon State	CW	-18	-19.5	-18
138 Clemson	ACCN	-2	-2.5	-2	203 San Diego State	11:00	-4	-7	-5
139 California	7:00	50.5	50.5	51	204 Hawaii		50.5	50.5	51
140 Louisville	ESPN2	-18.5	-20.5	-19	<b>Sunday, November 9th</b>				
141 Syracuse	3:30	46.5	45.5	47	251 Atlanta	9:30a	48.5	48.5	48
142 Miami, FL	ESPN	-28	-28.5	-29	252 Indianapolis	NFLN	-7	-6.5	-6
143 Stanford	4:30	43.5	41.5	44	253 Cleveland	1:00	37.5	-2.5	-3
144 North Carolina	CW	-9	-7.5	-6	254 N.Y. Jets	CBS	-1.5	37.5	37
145 Indiana	12:00	-13.5	-15	-13	255 New Orleans	1:00	39.5	39.5	38
146 Penn State	FOX	49	48.5	49	256 Carolina	FOX	-3.5	-5.5	-4
147 Ohio State	1:00	-29	-29.5	-28	257 Buffalo	1:00	-8.5	-9.5	-8
148 Purdue	BTN	48.5	48	48	258 Miami	CBS	49.5	49.5	50
149 Maryland	2:30	59	59	-1	259 Jacksonville	1:00	41.5	37.5	-1
150 Rutgers	FS1	-1	PK	57	260 Houston	CBS	-2.5	-1	37
151 Wake Forest	7:00	49	48	51	261 Baltimore	1:00	-3.5	-4	-5
152 Virginia	ESPN	-7	-6.5	-7	262 Minnesota	FOX	46.5	49	51
153 Bowling Green	1:00	51	50.5	48	263 New England	1:00	47.5	48	46
154 Eastern Michigan	ESPN+	-2	-2	-4	264 Tampa Bay	CBS	-1.5	-2.5	-4
155 Georgia	12:00	-7.5	-8.5	-10	265 N.Y. Giants	1:00	45.5	47	49
156 Mississippi State	ESPN	56.5	57.5	56	266 Chicago	FOX	-3	-4.5	-3
157 Missouri State	1:00	51	51	50	267 Arizona	4:05	44.5	45.5	47
158 Liberty	ESPN+	-8	-8	-6	268 Seattle	CBS	-6	-6.5	-7
159 UAB	2:00	54	53.5	56	269 Detroit	4:25	-3.5	-8	-10
160 Rice	ESPN+	-3	-2.5	-4	270 Washington	FOX	51.5	49	50
161 Iowa State	3:30	58	57	56	271 L.A. Rams	4:25	-3	-4	-5
162 TCU	FOX	-6.5	-6.5	-6	272 San Francisco	FOX	48.5	49.5	49
163 Texas A&M	3:30	-6	-7	-8	273 Pittsburgh	8:20	46.5	45	46
164 Missouri	ABC	49	47.5	48	274 L.A. Chargers	NBC	-3.5	-3	-4
165 BYU	12:00	53.5	52.5	53	<b>Monday, November 10th</b>				
166 Texas Tech	ABC	-10.5	-10	-11	275 Philadelphia	8:15	44.5	45	48
					276 Green Bay	ABC	-3	-2.5	-2

**Games in Rotation Order**  
**Wednesday, November 5th**

**HOME TEAM IN CAPS**

**BALL STATE 25 Kent State 21.** Ball State is slightly better in ypp, ypg and ppg margins and have played comparable schedules. We've seen this line go from Ball State -1.5 to -3 in the last 24 hours and we agree with the move as bet Ball State -2.5.

**TOLEDO 28 Northern Illinois 14.** Toledo has lost 18 times outright as a favorite since 2021 including three this year. 12 of those losses have come as a favorite of at least 7 points. By far the most in the nation during that span. With that being said, it is a bad matchup for a NIU offense that ranks No. 134 in ypp facing a Toledo defense that ranks No. 3 in ypp. We did bet NIU +14.5.

**Thursday, November 6th**

**SOUTH FLORIDA 39 Utsa 27.** UTSA comes in off their best performance of the season as they upset Tulane 48-26 as 6-point home underdogs. UTSA is now 32-4 at home under Jeff Traylor. The problem...this game won't be played in the Alamodome. USF is fresh off a bye after blowing a 14-point 4Q lead to Memphis in their last outing. Will they keep the foot on the pedal here? Market seems to think so. We're passing.

**APPALACHIAN STATE 32 Georgia Southern 28.** "Deeper Than Hate" rivalry with Appalachian State leading the series 21-16-1. An important game for both if either wants to make a bowl game. The Georgia Southern No. 133 defense concerns us but GS is the better running team and has played the much tougher schedule (No. 87 vs No. 123). We bet GS +6.5.

**Friday, November 7th**

**CENTRAL FLORIDA 25 Houston 24.** Houston comes in off the upset loss to West Virginia as 13.5-point favorites. That pretty much sealed their fate when it came to the Big 12 and the playoffs. They're facing a UCF team that took a lot of steam in the market last week vs Baylor only to lose 30-3. UCF is the more explosive team (+1.4 vs +0.6 in ypp margin). We lean with them here despite Houston having the coaching edge.

**MEMPHIS 30 Tulane 26.** If the playoffs started today, Memphis would be traveling to Georgia in the first round. We don't think the Tigers are a safe bet due to a tough final 3-games. It starts here vs a Tulane team smarting from an upset loss at UTSA. Tulane has played the much tougher schedule (No. 54 vs No. 122). Early money has been on Tulane and we're a part of it as we bet Tulane +7.5. We prefer OVER at current.

**USC 32 Northwestern 18.** A tough spot for USC playing on short rest after traveling while Northwestern is fresh off a bye. Kudos to the Trojans for winning a Big Ten road game last week BUT they didn't cover and benefited greatly from Nebraska's QB Raiola getting hurt (USC trailed 14-6 at that point). Northwestern as a big dog already covered vs Oregon and they won outright at Penn State. Their slow tempo (No. 130) and solid defense (No. 13 in scoring) plays into it. We bet Northwestern +15.5.

**Saturday, November 8th**

**EAST CAROLINA 41 Charlotte 14.** Charlotte has 14 players that were in the summer 2-deep out for the season. However, they did get a bye to lick their wounds a bit. A lot of the other AAC teams get the publicity but we've upgraded ECU 9 points since the start of the year. Our power ratings like Charlotte here but we can't get to the window.

**FLORIDA ATLANTIC 32 Tulsa 28.** Similar profiles here. Both have first-year coaches and both are 4-4 ATS and are off a bye. Tulsa is slightly better in ypp margin (-0.5 vs -0.6). Both teams run fast tempo (Tulsa No. 7 in plays per minute while FAU is No. 2). Neither offense has been extremely efficient though. We lean UNDER.

**Florida 24 KENTUCKY 20.** Despite Georgia taking a knee instead of scoring late that irked many Bulldog backers, the Gators were the right side and could have won the game outright. That was the one-game interim bump. Will they come back to earth here? Kentucky has had some good performances in recent weeks nearly upsetting Texas and then upsetting Auburn as 12-point underdogs last week. Market likes Kentucky, our power ratings lean Florida. We haven't bet side or total.

**ARMY 27 Temple 21.** Army kicked a FG on the final play to beat Air Force last week. They are 0-3 ATS at home this year. Meanwhile, Temple comes in off their worst performance of the season as they were crushed by East Carolina. The Owls did face Navy earlier this year and should have won the game outright (Navy scored a long TD in the final minute). Temple is better in the stats (-0.2 vs -0.6 in ypp margin). We haven't bet side or total.

**James Madison 35 MARSHALL 22.** JMU has been super impressive with a 6-2 ATS mark this year covering their games by 8.4 points per game. They have destroyed their last two opponents in the second half (ODU and Texas State) outscoring them 59-0. Both those teams are better than Marshall. If you're looking to fade JMU...maybe do it in the first half. We bet OVER 52.5 and still lean that way. Marshall has seen their last five games go OVER by an average of 21.9 ppg.

**COASTAL CAROLINA 31 Georgia State 26.** Georgia State is 1-7 ATS failing to cover their games by an average of 10.4 ppg. We still bet them +7.5 here. It is more of a fade against a Coastal Carolina team that has been favored in one game this year, yet the Chanticleers have five wins. Coastal is -93 ypg on the season, the same as Georgia State despite playing a much weaker schedule.

**WEST VIRGINIA 28 Colorado 24.** If this game were played a few weeks ago, Colorado would have been a TD favorite. However, after a pair of blowout losses where the word "quit" is starting to float around Colorado, we have WVU favored by a TD. It also reflects a WVU team that won outright as a 13.5-point dog last week at Houston. We've downgraded Colorado 8 points the last two weeks and we still can't get to this number.

**Smu 32 BOSTON COLLEGE 21.** Tough spot here for SMU coming off one of their biggest wins in 40 years last week over Miami in OT. The Ponies have been outgained on the season despite a 6-3 record. Boston College has given Louisville and Notre Dame fits the last two weeks trailing by one possession in both games in the fourth quarter.

**CLEMSON 29 Florida State 27.** The stats say FSU is the play here as the Noles are +2.3 in ypp margin while Clemson is +0.9. The Tigers have lost six straight home games to Power 4 conference teams. Yes, you read that right. SIX straight. It wasn't that long ago, the Tigers had won 40 straight at home. FSU played their best game since the opener last week in a blowout vs Wake. Tough forecasting which Noles team will show up. Pass.

**LOUISVILLE 35 California 16.** Cal backers suffered a tough break last week as a "pick 6" in the final minute did them in vs Virginia. More concerning is this Cal OL that has gotten manhandled in recent weeks. The Bears are only averaging 42 rushing ypg the last 4 games and have allowed 14 sacks. Louisville has taken the money so far but we're not involved. Louisville starting RB Brown is out.

**MIAMI, FL 38 Syracuse 9.** Dating back to last season, Mario Cristobal is just 7-5 in his last 12 games losing outright as a big favorite four times. That includes last week's loss to SMU that basically eliminated Miami from the CFB Playoffs (see their No. 18 ranking last night). Syracuse started a walk-on QB last week. He went 4 of 18 for 39 yards. What Miami team will show up?

**NORTH CAROLINA 25 Stanford 19.** Don't look now but North Carolina is starting to show improvement. The Heels should have beat both Cal and Virginia but fumbled at the goal line. Last week, they easily controlled Syracuse. Stanford has been feisty this year but that's been at home. On the road, they are -23 ppg and -147 ypg. Still, it's tough laying more than a TD with a NC offense that ranks No. 128.

**Indiana 31 PENN STATE 18.** Indiana is starting to get priced like the top team in the country. Penn State was +17.5 at Ohio State last week. Now they are +15 at home to Indiana. The Hoosiers are No. 1 in ypg and scoring margin. We haven't seen quit from Penn State though as they trailed Ohio State by only 3 at halftime. This seems a bit pricey.

**Ohio State 38 PURDUE 10.** Remarkably the Buckeyes are on a 11-0-1 ATS run since losing to Michigan last year. You would think you'd start paying premiums on their point-spreads. However, the market bet them from 20.5-point down to 17.5-point home favorites vs Penn State last week. Purdue showed a ton of fight in a 5-point loss at Michigan. We haven't bet side or total here.

**Maryland 29 RUTGERS 28.** We're a little surprised Rutgers has received some support in the market so far this week. Maryland is the far superior team statistically as they are -0.1 in ypp margin while Rutgers is -1.9. Maryland has the much better defense allowing 5.3 ypp (No. 52) vs Rutgers' defense allowing 7.5 (No. 135).

**VIRGINIA 29 Wake Forest 22.** Virginia is the most fortunate team in the country. Bill Connelly's post-game win expectancy numbers have them with 5.2 wins, not 8! Wake is coming off their worst performance of the season though. Will that be a trend or will they be pesky like they were vs Georgia Tech and SMU? We lean OVER.

**EASTERN MICHIGAN 26 Bowling Green 22.** BG has lost 3 straight games and failed to cover the spread by 3 TD's per game. They fired their OC, could be starting a 4th string QB here and had three players get arrested for assault. Meanwhile, EMU comes in off a bye and had covered three of four prior. We like EMU here.



**Georgia 33 MISSISSIPPI STATE 23.** Tell us where you heard this before. Georgia got off to a slow start but pulled out a close win. It's happened four times this year. Last week they trailed Florida 20-17 in the fourth quarter but won 24-20. Their backers wanted more but QB Stockton took a knee at the one-yard line instead of scoring (see page 1). They're taking on a Mississippi State team that is 8-1 ATS this year. We bet Georgia -9.5 on the look-aheads last week. Georgia disappointed, Mississippi State pulled an upset over Arkansas. Safe to say, we got a bad number.

**LIBERTY 28 Missouri State 22.** Liberty had one of the weaker offenses in the country heading into last week's game but put up 59 points on Delaware (we bet Delaware). Missouri State has been much better than expected in their first year of FBS play. We lean Mo State.

**RICE 30 Uab 26.** Rice comes in off a 38-14 loss to Memphis. The same Memphis team that UAB upset a few weeks ago. Did the Blazers just get a one-game interim bump? They fell at UConn by 19 last week but the yards were close (374-372 but UAB was -3 in turnovers). UAB has much better ypp margin (-0.4 vs -1.1) and have played the tougher schedule. Market likes them here but we prefer OVER.

**TCU 31 Iowa State 25.** Iowa State started the season 5-0. That feels like an eternity ago as the Cyclones have lost their last 4 games and also failed to cover them by an average of 11.5 ppg. Last week they allowed a backup QB to run for 228 yards against them (ASU's Jeff Sims). Now they're back to their preferred underdog role. TCU comes in off a bye. We haven't bet side or total.

**Texas A&M 28 MISSOURI 20.** Missouri will be down to a 3rd-string true freshman QB in Matt Zollers here. We don't think the market downgraded the Tigers enough here. We bet Texas A&M -4.5 and -6.5 who is off a bye and off their best performance of the season (destroyed LSU in second half on road).

**TEXAS TECH 32 Byu 21.** The biggest game of the year in the Big 12 (so far). Both rank in the CFB Playoff Top 8 and *ESPN College Gameday* will be there. 8-0 BYU has far exceeded expectations this year but do have a couple of fortunate wins. Texas Tech ranks No. 4 in ypp margin and No. 2 in scoring margin and that's with their starting QB missing several games. He returned last week and they easily handled Kansas State. We bet Texas Tech -8.5 in their biggest home game since Texas in 2008.

**VANDERBILT 27 Auburn 20.** Vanderbilt trailed Texas 34-10 last week but found a way to get a cover as they lost by 3 (see page 1). They need to win out to have a chance at the CFB playoffs. They're facing an Auburn team who fired head coach Hugh Freeze. Teams have gone 7-2 ATS in the first game after firing their coach this year. Vandy is also 7-2 ATS though and has more to play for. We bet Vandy -6.5.

**ALABAMA 30 Lsu 20.** We think the firing of Brian Kelly will be "addition by subtraction" for LSU. He was never a good fit in Baton Rouge and as more stories will come out in the coming months, he was simply collecting a paycheck. We expect LSU to play one of their best games of the season. Alabama has won 7 straight since losing to FSU in the opener but they've been outgained in each of their last three.

**Texas State 31 UL-LAFAYETTE 29.** Texas State has failed to cover the spread in six straight games. It's the second year in a row where they've been a disappointment. ULL is off one of their best performances, an upset over South Alabama. We lean ULL and UNDER if you can find a "+3".

**Oregon 26 IOWA 18.** One of the more intriguing games especially with the CFB Playoff committee ranking Iowa at No. 20. The Hawkeyes have been very well as of late and they played Indiana tougher at home than Oregon did at home. Still the Ducks are the far superior team. They are +3.3 in ypp margin while Iowa is +1.1 (schedule strength similar). These two have four common Big Ten opponents already. Average line in those games was Oregon -13, Iowa "pick". That would infer a point-spread that should be closer to 10 here. We bet Oregon -5.5.

**Washington 28 WISCONSIN 17.** Both teams come in off a bye. Washington still has some CFB playoff hopes and should head into the Oregon game at 9-2. Speaking of Oregon, Wisconsin only lost by 14 at Oregon in their last game. While the Badgers offense ranks No. 135 in ypp, ypg and scoring, their defense has fought valiantly. We didn't bet side or total.

**Unlv 32 COLORADO STATE 26.** UNLV seems like a great OVER team right now but the market is finally starting to adjust. Their offense ranks 15th in scoring while their defense is No. 134 in total D and No. 126 in scoring. Not sure if that translates here vs a Colorado State team with an interim coach that got shutout in their last game. We haven't bet side or total.

**ARIZONA 29 Kansas 25.** Kansas concerns us a bit right now. They got crushed by Texas Tech and Kansas State and then only outgained Oklahoma State by 26 yards last week. Meanwhile, Arizona is off a dominant win and cover over Colorado. We did think the early line of "6" was too high and so far the market agrees.

**Louisiana Tech 29 DELAWARE 26.** We bet Delaware last week. Safe to say, it was abysmal failure as the Blue Hens D gave up 59 points to a Liberty offense that came in averaging 19 ppg! Meanwhile, Louisiana Tech crushed Sam Houston State. We faded LT in the game. We must have not learned our lessons from last week as we bet Delaware again here. The market disagrees.

**Florida International 26 MIDDLE TENNESSEE 25.** Both teams are -0.7 in ypp margin but FIU has played the slightly tougher schedule and is the better running team. Our power ratings have this game right at the number. Pass.

**UTEP 26 Jacksonville State 25.** We think UTEP is a sneaky-good bet this week. The Miners should have covered their game against Kennesaw last week (see page 1). UTEP is better in ypp margin (+0.1 vs -0.1) and has played a slightly tougher schedule (No. 130 vs No. 138). We bet UTEP +3.5 and we'll call for the outright upset.

**SAN JOSE STATE 34 Air Force 30.** Air Force has had a "tough luck" season as they lost another close game last week, this time to rival Army on the final play. San Jose State has been a disappointment this season but is off their best game as they beat Hawaii in a shoot-out. We bet them here -2.5 but the value has dried up. Total seems a bit high.

**Nebraska 24 UCLA 23.** One factor handicap here. How much is Nebraska QB Dylan Raiola worth to the point spread? He is out for the season and looked very valuable considering how bad the backup was in the second half vs USC last week. With that being said, we bet Nebraska +1.5. Far superior team (+1.1 vs -0.3 in ypp margin).

**Duke 35 CONNECTICUT 26.** Duke comes in off their first win at Clemson since 1980. It was a back-and-forth game that saw the Blue Devils convert all five 4th down attempts and also the game-winning 2-point attempt with :40 left to win by 1. They were outgained 560-439. Connecticut has already upset ACC Boston College this year and should have upset Syracuse. Last year they only lost by 5 at Duke. They won't be intimidated. We bet Connecticut +13.5 but the value has dried up. We prefer UNDER at current.

**Southern Miss 29 ARKANSAS STATE 26.** Both teams should have worse records. Southern Miss is 6-2 on the season but has only outgained their opponents by 17 ypg. Arkansas State has pulled four straight outright upsets. They are -1.1 in ypp margin (No. 123). When we don't like either team, we always defer to the power ratings and for the first time in weeks, it backs Arkansas State.

**Kennesaw State 29 NEW MEXICO STATE 20.** Kennesaw State was expected to be one of the worst teams in CUSA this year. They were 50/1 to win the league. Now they're 4-0 in league play and less than 2/1 to win the league. Can they handle expectations? They might have covered as a big favorite last week but didn't deserve to (see page 1). New Mexico State is among the most banged up teams in the country though. We bet Kennesaw -6.5.

**UTAH STATE 31 Nevada 21.** Both teams come in off a bye. Utah State still has bowl hopes at 4-4 (6-2 ATS). Nevada at 1-7 does not. Market seems to like Nevada here though as the line has gone from Utah State -11 to -9. We're in the middle.

**NOTRE DAME 42 Navy 17.** ND has dominated the series with a 81-13-1 mark with the famous 43-game win streak. While Navy had a 15-year stretch where they won four games vs ND and lost five others by less than a TD, ND has regained control winning five of the last 6 by at least 22 points including 42-3 in Ireland two years ago and 51-14 last year in New Jersey. This is the first time in four years they're playing at ND. This is the biggest strength of schedule disparity (ND No. 13 vs Navy No. 146) in CFB this week. Navy lost their first game of the season last week and it was their first game vs a Top 90 team in our power ratings this season. Can ND take advantage of their red zone trips? They rank No. 125. ND money usually shows late in the week so we'll wait to see what kind of number we can get on Navy.

**OREGON STATE 35 Sam Houston State 17.** Oregon State has covered two straight with the interim coach including an upset over Washington State last week. They're playing a Sam Houston State team that is 0-8 straight up and 1-7 ATS failing to cover by 13 ppg. Pass.

**San Diego State 28 HAWAII 23.** After Boise's shocking loss to Fresno, San Diego State is now a minus-money favorite to win the Mountain West! The Aztecs were 40/1 in the summer. They are 7-1 ATS covering their games by 15 ppg. We bet them this week but this number has climbed significantly.

# 2025 College Football Power Ratings (Vegas Ratings Not AP Poll Style)

Rk	School	Start	Now	Diff	Rk	School	Start	Now	Diff	Rk	School	Start	Now	Diff
1.	Ohio State	90.15	92.15	+2.0	51.	Memphis	65.38	68.38	+3.0	101.	Arkansas State	52.96	54.46	+1.5
2.	Indiana	79.40	91.90	+12.5	52.	Northwestern	63.23	68.23	+5.0	102.	Kennesaw State	44.36	54.36	+10.0
3.	Oregon	85.50	88.50	+3.0	53.	Nebraska	76.16	68.16	-8.0	103.	UL-Lafayette	60.15	54.15	-6.0
4.	Texas A&M	83.40	88.40	+5.0	54.	UCF	66.14	68.14	+2.0	104.	South Alabama	59.62	54.12	-5.5
5.	Notre Dame	87.28	87.28	0.0	55.	NC State	69.25	67.25	-2.0	105.	Marshall	52.60	54.10	+1.5
6.	Georgia	88.75	86.25	-2.5	56.	Tulane	67.67	66.67	-1.0	106.	Appalachian State	55.47	53.47	-2.0
7.	Alabama	89.10	86.10	-3.0	57.	Boise State	73.73	66.23	-7.5	107.	Jacksonville State	51.60	52.60	+1.0
8.	Texas Tech	76.47	85.47	+9.0	58.	Maryland	63.68	66.18	+2.5	108.	Central Michigan	48.48	52.48	+4.0
9.	Ole Miss	80.86	83.86	+3.0	59.	East Carolina	56.93	65.93	+9.0	109.	Florida Atlantic	50.93	52.43	+1.5
10.	Utah	75.86	83.36	+7.5	60.	Minnesota	72.72	65.72	-7.0	110.	Georgia Southern	59.69	52.19	-7.5
11.	Miami (FL)	81.09	83.09	+2.0	61.	UCLA	70.20	65.20	-5.0	111.	Western Kentucky	53.60	52.10	-1.5
12.	Oklahoma	81.64	82.64	+1.0	62.	Wake Forest	59.13	65.13	+6.0	112.	Colorado State	56.21	51.71	-4.5
13.	USC	79.03	81.53	+2.5	63.	Old Dominion	58.87	64.87	+6.0	113.	Rice	51.09	51.59	+0.5
14.	Tennessee	82.07	81.07	-1.0	64.	San Diego State	52.82	64.82	+12.0	114.	Buffalo	57.48	50.48	-7.0
15.	Texas	89.56	81.06	-8.5	65.	Michigan State	68.68	64.68	-4.0	115.	Delaware	47.92	50.42	+2.5
16.	Vanderbilt	72.89	79.89	+7.0	66.	Rutgers	70.65	64.65	-6.0	116.	Coastal Carolina	55.41	50.41	-5.0
17.	Michigan	83.48	79.48	-4.0	67.	Navy	64.95	63.95	-1.0	117.	Missouri State	46.24	50.24	+4.0
18.	Louisville	77.87	78.37	+0.5	68.	Virginia Tech	70.38	63.88	-6.5	118.	Tulsa	44.44	49.94	+5.5
19.	Missouri	76.16	78.16	+2.0	69.	Wisconsin	74.06	62.56	-11.5	119.	Oklahoma State	63.11	49.61	-13.5
20.	LSU	84.15	78.15	-6.0	70.	North Carolina	67.81	62.31	-5.5	120.	UAB	48.97	49.47	+0.5
21.	Florida	82.36	77.86	-4.5	71.	Purdue	55.56	62.06	+6.5	121.	UTEP	47.71	48.71	+1.0
22.	Iowa	76.85	77.85	+1.0	72.	Toledo	61.54	62.04	+0.5	122.	FIU	48.21	48.21	0.0
23.	Illinois	76.45	76.95	+0.5	72.	UTSA	64.54	62.04	-2.5	123.	Northern Illinois	52.66	48.16	-4.5
24.	Washington	75.25	76.75	+1.5	74.	California	63.37	61.87	-1.5	124.	Nevada	50.08	48.08	-2.0
25.	BYU	72.33	76.33	+4.0	75.	West Virginia	66.26	61.76	-4.5	125.	Georgia State	52.31	47.81	-4.5
26.	Penn State	90.79	75.79	-15.0	76.	Army	62.52	61.02	-1.5	126.	Bowling Green	51.81	47.31	-4.5
27.	TCU	76.13	75.63	-0.5	77.	Washington State	55.81	60.81	+5.0	127.	Eastern Michigan	48.38	46.88	-1.5
28.	Auburn	79.61	75.61	-4.0	78.	Colorado	69.37	60.37	-9.0	128.	UL-Monroe	52.22	46.22	-6.0
29.	Pittsburgh	70.73	74.73	+4.0	79.	Connecticut	59.75	60.25	+0.5	129.	Akron	46.61	46.11	-0.5
30.	Florida State	71.62	74.62	+3.0	80.	Ohio	59.43	59.93	+0.5	130.	Middle Tennessee	46.97	45.47	-1.5
31.	Cincinnati	70.10	74.60	+4.5	81.	UNLV	62.47	59.47	-3.0	131.	New Mexico State	46.25	43.75	-2.5
32.	Clemson	85.55	74.55	-11.0	82.	New Mexico	48.43	59.43	+11.0	132.	Ball State	43.05	43.05	0.0
33.	Georgia Tech	74.41	74.41	0.0	83.	Boston College	68.34	59.34	-9.0	133.	Charlotte	47.51	41.51	-6.0
34.	Mississippi State	67.31	74.31	+7.0	84.	Stanford	59.56	58.56	-1.0	134.	Kent State	36.96	40.96	+4.0
35.	Duke	70.50	74.00	+3.5	85.	Southern Miss	51.23	58.23	+7.0	135.	Sam Houston State	49.69	40.19	-9.5
35.	SMU	78.50	74.00	-4.5	86.	San Jose State	60.95	57.95	-3.0	136.	Massachusetts	44.23	35.73	-8.5
37.	Arkansas	74.94	73.94	-1.0	87.	Hawaii	56.38	57.88	+1.5	<b>Biggest Gains From Start of Season</b>		<b>Biggest Losses From Start of Season</b>		
38.	Kansas State	78.26	73.26	-5.0	88.	Miami (OH)	56.85	57.35	+0.5	Indiana	+12.5	Penn State	-15.0	
39.	Arizona	65.78	72.78	+7.0	89.	Fresno State	58.23	57.23	-1.0	San Diego St	+12.0	Oklahoma State	-13.5	
40.	Baylor	77.59	72.59	-5.0	90.	Syracuse	66.62	57.12	-9.5	New Mexico	+11.0	Wisconsin	-11.5	
41.	South Carolina	79.03	72.53	-6.5	91.	Air Force	58.77	56.77	-2.0	Kennesaw State	+10.0	Clemson	-11.0	
42.	USF	63.53	72.03	+8.5	92.	Texas State	59.71	56.71	-3.0	North Texas	+9.5	Syracuse	-9.5	
43.	Iowa State	75.52	71.52	-4.0	93.	Temple	48.53	56.53	+8.0	East Carolina	+9.0	Sam Houston St	-9.5	
44.	Virginia	66.46	70.96	+4.5	94.	Troy	57.01	56.51	-0.5	Texas Tech	+9.0	Colorado	-9.0	
45.	Arizona State	79.83	70.83	-9.0	95.	Utah State	50.61	56.11	+5.5	USF	+8.5	Arizona State	-9.0	
46.	James Madison	64.56	70.06	+5.5	96.	Oregon State	61.68	55.68	-6.0	Temple	+8.0	Boston College	-9.0	
47.	Kansas	72.94	69.94	-3.0	97.	Louisiana Tech	52.37	55.37	+3.0	Utah	+7.5	Texas	-8.5	
48.	Kentucky	69.63	69.63	0.0	98.	Western Michigan	49.34	55.34	+6.0			Massachusetts	-8.5	
49.	Houston	69.52	69.52	0.0	99.	Wyoming	54.83	55.33	+0.5					
50.	North Texas	58.95	68.45	+9.5	100.	Liberty	60.10	54.60	-5.5					

## 2025 Week 11 College Football Power Ratings by Conference

American			MAC			Sun Belt			Big 12			SEC		
Rk	Team	Rating	Rk	Team	Rating	Rk	Team	Rating	Rk	Team	Rating	Rk	Team	Rating
42.	USF	72.03	72.	Toledo	62.04	46.	James Madison	70.06	74.	California	61.87	22.	Iowa	77.85
50.	North Texas	68.45	80.	Ohio	59.93	63.	Old Dominion	64.87	83.	Boston College	59.34	23.	Illinois	76.95
51.	Memphis	68.38	88.	Miami (OH)	57.35	85.	Southern Miss	58.23	84.	Stanford	58.56	24.	Washington	76.75
56.	Tulane	66.67	98.	Western Michigan	55.34	92.	Texas State	56.71	90.	Syracuse	57.12	26.	Penn State	75.79
59.	East Carolina	65.93	108.	Central Michigan	52.48	94.	Troy	56.51				52.	Northwestern	68.23
67.	Navy	63.95	114.	Buffalo	50.48	101.	Arkansas State	54.46				53.	Nebraska	68.16
72.	UTSA	62.04	123.	Northern Illinois	48.16	103.	UL-Lafayette	54.15				58.	Maryland	66.18
76.	Army	61.02	126.	Bowling Green	47.31	104.	South Alabama	54.12				60.	Minnesota	65.72
93.	Temple	56.53	127.	Eastern Michigan	46.88	105.	Marshall	54.10				61.	UCLA	65.20
109.	Florida Atlantic	52.43	129.	Akron	46.11	106.	Appalachian State	53.47				65.	Michigan State	64.68
113.	Rice	51.59	132.	Ball State	43.05	110.	Georgia Southern	52.19				66.	Rutgers	64.65
118.	Tulsa	49.94	134.	Kent State	40.96	116.	Coastal Carolina	50.41				69.	Wisconsin	62.56
120.	UAB	49.47	136.	Massachusetts	35.73	125.	Georgia State	47.81				71.	Purdue	62.06
133.	Charlotte	41.51				128.	UL-Monroe	46.22						
CUSA			Mountain West			ACC			Big Ten					
Rk	Team	Rating	Rk	Team	Rating	Rk	Team	Rating	Rk	Team	Rating	Rk	Team	Rating
97.	Louisiana Tech	55.37	57.	Boise State	66.23	11.	Miami (FL)	83.09	47.	Kansas	69.94	4.	Texas A&M	88.40
100.	Liberty	54.60	64.	San Diego State	64.82	18.	Louisville	78.37	49.	Houston	69.52	6.	Georgia	86.25
102.	Kennesaw State	54.36	81.	UNLV	59.47	29.	Pittsburgh	74.73	54.	UCF	68.14	7.	Alabama	86.10
107.	Jacksonville State	52.60	82.	New Mexico	59.43	30.	Florida State	74.62	75.	West Virginia	61.76	9.	Ole Miss	83.86
111.	Western Kentucky	52.10	86.	San Jose State	57.95	32.	Clemson	74.55	78.	Colorado	60.37	12.	Oklahoma	82.64
115.	Delaware	50.42	87.	Hawaii	57.88	33.	Georgia Tech	74.41	119.	Oklahoma State	49.61	14.	Tennessee	81.07
117.	Missouri State	50.24	89.	Fresno State	57.23	35.	Duke	74.00				15.	Texas	81.06
121.	UTEP	48.71	91.	Air Force	56.77	35.	SMU	74.00				16.	Vanderbilt	79.89
122.	FIU	48.21	95.	Utah State	56.11	44.	Virginia	70.96				19.	Missouri	78.16
130.	Middle Tennessee	45.47	99.	Wyoming	55.33	55.	NC State	67.25				20.	LSU	78.15
131.	New Mexico State	43.75	112.	Colorado State	51.71	62.	Wake Forest	65.13				21.	Florida	77.86
135.	Sam Houston State	40.19	124.	Nevada	48.08	68.	Virginia Tech	63.88				28.	Auburn	75.61
												34.	Mississippi State	74.31
												37.	Arkansas	73.94
												41.	South Carolina	72.53
												48.	Kentucky	69.63



## Week 11 Computer Projected Lines for Every CFB Game

For the past eight seasons we have posted computer projected lines for every game on Wednesday. **Games where there was of difference of more than 3 points saw our computer lines actually beat the Vegas line at a 506-441-14 (53.4%) clip! Last week our computer went 1-1 and for the season now stands at 17-25-2.** That's pretty solid and actually better than our own handicapping in some seasons. Keep in mind, these computer lines don't take into consideration off-the-field factors like revenge or flat spots or if there are late-week injuries. They are basically a power-rating number difference between the two teams that also takes into consideration the home field advantage.

Of the 2 games where our computer is off more than 3 points compared to the Vegas line (highlighted), our favorite team this week to back would be **Arkansas State +4.5**.

The Comp column is the computer projected line and the Diff column is the difference between the Vegas line and the Computer line. "+" numbers in the difference column say back the underdog. "-" numbers in the difference

Wednesday, Nov 5th	Line	Comp	Diff
105 Kent State			
106 Ball State	-3.0	-3.6	-0.6
107 Northern Illinois			
108 Toledo	-14.5	-16.4	-1.9

Thursday, Nov 6th	Line	Comp	Diff
111 UTSA			
112 South Florida	-13.5	-11.7	+1.8
113 Georgia Southern			
114 Appalachian St	-5.5	-4.0	+1.5

Friday, Nov 7th	Line	Comp	Diff
115 Houston			
116 Central Florida	+1.0	-1.6	+2.6
117 Tulane			
118 Memphis	-3.5	-4.5	-1.0
119 Northwestern			
120 USC	-14.0	-16.3	-2.3

Saturday, Nov 8th	Line	Comp	Diff
121 Charlotte			
122 East Carolina	-28.5	-26.4	+2.1
123 Tulsa			
124 Florida Atlantic	-3.5	-4.5	-1.0
125 Florida			
126 Kentucky	+3.0	+5.7	-2.7
127 Temple			
128 Army	-6.5	-7.2	-0.7
129 James Madison			
130 Marshall	+13.5	+13.7	-0.2
131 Georgia State			
132 Coastal Carolina	-7.5	-4.8	+2.7
133 Colorado			
134 West Virginia	-6.5	-4.1	+2.4
135 SMU			
136 Boston College	+10.5	+12.4	-1.9
137 Florida State			
138 Clemson	-2.5	-3.4	-0.9
139 California			
140 Louisville	-20.5	-19.3	+1.2
141 Syracuse			
142 Miami, FL	-28.5	-28.7	-0.2
143 Stanford			
144 North Carolina	-7.5	-6.3	+1.2
145 Indiana			
146 Penn State	+15.0	+12.4	+2.6
147 Ohio State			
148 Purdue	+29.5	+28.1	+1.4
149 Maryland			
150 Rutgers	0.0	-0.5	-0.5
151 Wake Forest			
152 Virginia	-6.5	-8.1	-1.6
153 Bowling Green			
154 Eastern Michigan	-2.0	-1.3	+0.7

Saturday, Nov 8th	Line	Comp	Diff
155 Georgia			
156 Mississippi State	+8.5	+9.4	-0.9
157 Missouri State			
158 Liberty	-8.0	-6.9	+1.1
159 UAB			
160 Rice	-2.5	-3.9	-1.4
161 Iowa State			
162 TCU	-6.5	-6.6	-0.1
163 Texas A&M			
164 Missouri	+7.0	+7.2	-0.2
165 BYU			
166 Texas Tech	-10.0	-11.9	-1.9
167 Auburn			
168 Vanderbilt	-6.5	-6.0	+0.5
169 LSU			
170 Alabama	-10.0	-12.0	-2.0
171 Texas State			
172 UL-Lafayette	+2.5	+0.3	+2.2
173 Oregon			
174 Iowa	+6.0	+7.7	-1.7
175 Washington			
176 Wisconsin	+11.5	+11.4	+0.1
177 UNLV			
178 Colorado State	+4.5	+5.5	-1.0
179 Kansas			
180 Arizona	-4.5	-5.3	-0.8
181 Louisiana Tech			
182 Delaware	+5.5	+3.0	+2.5
183 FIU			
184 Middle Tennessee	+1.0	+0.5	+0.5
185 Jacksonville State			
186 UTEP	+1.0	+1.9	-0.9
187 Air Force			
188 San Jose State	-4.5	-3.2	+1.3
189 Nebraska			
190 UCLA	-1.5	+0.7	+2.2
191 Duke			
192 Connecticut	+9.0	+12.0	-3.0
193 Southern Miss			
194 Arkansas State	+4.5	+1.5	+3.0
195 Kennesaw State			
196 New Mexico St	+9.0	+8.9	+0.1
197 Nevada			
198 Utah State	-9.0	-10.3	-1.3
199 Navy			
200 Notre Dame	-26.5	-26.6	-0.1
201 Sam Houston State			
202 Oregon State	-19.5	-18.2	+1.3
203 San Diego State			
204 Hawaii	+7.0	+4.7	+2.3

## Betting CFB Openers

Every Sunday in Vegas at 11am PT, Circa Sports is one of the first books in the world to release CFB lines and we bet them every week. We think it's the best value bets we make all week. 2020 was the first season where we tracked every single bet we made and posted them in the weekly newsletters. We were very pleased with our 119-76-3 (61%) record on these Sunday bets with an average line value of 2.6 ppg! In 2021, we were 224-196-5 (53.3%) vs the Circa openers with an average line value of 1.8 ppg. In 2022, we were 314-262-14 (54.5%, CLV 417-122-51 +1.65 ppg). In 2023, we were 405-358-6 (53.4%, CLV 577-137-55 +2.09 ppg). So far this season we are 157-127-1 55.3% (CLV 214-52-19 +1.82 ppg) Below is some of what we bet already for Week 11 which includes bets we made in the summer for this week.

\$590 (102) Ohio -2.5 (Fan Duel)  
 \$575 (106) Ball State -2.5 (Fan Duel)  
 \$550 (107) Northern Illinois +14.5 (Draft Kings)  
 \$550 (113) Georgia Southern +6.5 (Draft Kings)  
 \$590 (116) Central Florida +1.5 (Draft Kings)  
 \$590 (117) Tulane +7.5 (Fan Duel)  
 \$550 (119) Northwestern +15.5 (Draft Kings)  
 \$575 (129) James Madison OVER 52.5 (Fan Duel)  
 \$540 (131) Georgia State +7.5 (Draft Kings)  
 \$525 (143) Stanford +8.5 (Fan Duel)  
 \$575 (152) Virginia -6.5 (Fan Duel)  
 \$550 (155) Georgia -9.5 (Draft Kings)  
 \$550 (162) TCU -3 (Draft Kings)  
 \$525 (163) Texas A&M -4.5 (Fan Duel)  
 \$550 (163) Texas A&M -6.5 (Draft Kings)  
 \$550 (166) Texas Tech -8.5 (Draft Kings)  
 \$590 (168) Vanderbilt -6.5 (Fan Duel)  
 \$1125 (173) Oregon -5.5 (Fan Duel)  
 \$525 (173) Oregon OVER 42.5 (Fan Duel)  
 \$560 (179) Kansas +6 (Draft Kings)  
 \$550 (182) Delaware +4.5 (Draft Kings)  
 \$550 (184) UTEP +3.5 (Fan Duel)  
 \$550 (188) San Jose State -2.5 (Draft Kings)  
 \$525 (189) Nebraska +1.5 (Fan Duel)...don't bet this. Nebraska QB Raiola is out for the year.  
 \$525 (192) Connecticut +13.5 (Fan Duel)  
 \$550 (194) Arkansas State +3.5 (Draft Kings)  
 \$560 (194) Arkansas State +6.5 (Draft Kings)  
 \$550 (195) Kennesaw State -6.5 (Draft Kings)  
 \$550 (203) San Diego State -3 (Draft Kings)

### Game of Year Bets we made in the summer (posted in the CFB Preview Guide):

\$550 (170) Alabama -5 (Bet Online)  
 \$550 (199) Navy +24.5 (Westgate)

### Versus Circa Sports Opening numbers:

If you got in front of every 3-point or more move in the FBS vs FBS markets (sides and totals)...congrats you are 193-137-1 (58.5%) this year.

If you faded every 3-point or more move right before kickoff...congrats you are 172-153-6 (52.9%).

### Numbers matter!

**Games in Rotation Order**  
**Thursday, November 7th**

**DENVER 25 Las Vegas 15.** Denver comes in winners of six straight including four by four points or less. The Broncos are 4-0 this year in games they trailed entering the fourth quarter. They did benefit from Houston QB CJ Stroud getting hurt early in the game. They're taking on a Las Vegas team that has lost six of their last seven games going 1-5-1 ATS in the process. The Raiders 2-point attempt was no good and they lost by 1 in OT to Jacksonville last week. Now traveling on a short week vs a Denver defense that ranks No. 1 in ypp allowed. We lean UNDER.

**Sunday, November 9th**

† **Indianapolis 27 Atlanta 21.** @Olympic Stadium in Berlin, Germany. Atlanta comes in losers of three straight. Their rally at New England last week fell short as they missed the extra point. Meanwhile, Indianapolis comes in off their 2nd loss of the season. It was misleading as the Colts had a 368-225 yard edge vs the Steelers but were done in by SIX TURNOVERS! The Colts have played a weak schedule (No. 30) but rank No. 3 in ypp margin and rank No. 20 in DVOA. For now we're sitting on the sidelines.

**Cleveland 20 N.Y. JETS 17.** Both teams come in off byes. The Jets are slightly better in the stats at -0.6 ypp margin and a No. 29 DVOA ranking compared to Cleveland's -0.7 ypp margin and No. 30 DVOA ranking. The Browns have played the much tougher schedule (No. 3 vs No. 22). We saw a big move in the market yesterday though as the "fire sale" in New York has begun. The Jets traded Sauce Gardner and Quinnen Williams and in return got three first round picks and a second round pick. Good news for the 2027 Jets and beyond, no so good news for the 2025 Jets.

**CAROLINA 21 New Orleans 17.** Both teams are -0.6 in ypp margin and the Saints have played the tougher schedule (No. 7 vs No. 24). The teams are trending in opposite directions though as the Saints are 1-8 SU, 2-7 ATS and have lost and failed to cover in four straight. Meanwhile, Carolina has won and covered four of their last five games. The highlight coming on Sunday when they upset the Packers as 13-point underdogs. This is only their 3rd favorite role in the last two years and it's the only time they've been favored by more than a FG. We lean Saints.

**Buffalo 29 MIAMI 21.** These two met on September 18th with Buffalo winning 31-21 as a 11-point home favorite. The Bills come in off their biggest win of the season as they upset the Chiefs 28-21 as 2.5-point home underdogs. It was their 5th straight win over Kansas City...in the regular season (4 straight post-season losses to them). QB Josh Allen set the Buffalo record completing 23 of 26 passes. Miami is 2-7 SU and heading towards big changes in the off-season. Still, we don't think they have quit on the season.

**Jacksonville 19 HOUSTON 18.** This is really a one-factor handicap surrounding the status of Houston QB CJ Stroud who is in concussion protocol. Last week, the Texans struggled with Davis Mills at QB including a period with six consecutive punts. Jacksonville comes in off the OT win at Las Vegas where they stopped the Raiders' 2-point attempt. Jags kicker Cam Little set an NFL-record with a 68-yard FG during the game while Houston's kicker hit five FG's last week. Houston is better in ypp margin (+0.3 vs -0.4) and they've played the tougher schedule. **Just before we went to press on Wednesday afternoon, CJ Stroud was downgraded to unlikely to play.**

**Baltimore 28 MINNESOTA 23.** Lamar Jackson returned and threw four TD passes as the Ravens beat Miami 28-6 last Thursday. The Ravens are 3-5 but the favorite in the AFC North. They're taking on a Minnesota team off their best performance of the season. The Vikings upset the Lions as 9.5-point underdogs. Baltimore has the better ypp and DVOA despite Jackson missing three games. Totals' players note that the two teams are a combined 13-3 to the OVER this year. We like the OVER.

**TAMPA BAY 25 New England 21.** Tampa Bay is coming in fresh off a bye while New England is playing a 10th straight week. The Patriots have won six straight games (5-1 ATS) but have played the weakest schedule in the NFL. The Bucs are slightly better in DVOA and Sagarin and have played the No. 8 schedule according to Sagarin. We think they are the slightly better team in one of the best situational spots this week. We like them under a FG.

**HOME TEAM IN CAPS**

**CHICAGO 26 N.Y. Giants 23.** The Bears won a wild game over Cincinnati last week. They led 41-27 with under three minutes left. Cincinnati got a TD and a 2-point conversion and recovered an onside kick. The Bengals scored a TD to go ahead with :54 left but the Bears got a 58-yard TD pass with :17 left. Chicago is now 5-3 but fraudulent as they are -0.5 in ypp margin. The Giants are -0.8 in ypp margin but have played the much tougher schedule (No. 1 vs No. 21 in Sagarin SOS). We lean Giants and OVER.

**SEATTLE 27 Arizona 20.** The Seahawks are possibly the best team in the NFL but are not getting priced that way. They are No. 1 in ypp margin at +1.6. They are No. 1 in DVOA. In fact, they have the 4th best DVOA after 8 games in NFL history. The top 3 teams were 8-0, so at 6-2, the Seahawks are a bit undervalued. They crushed Washington last week with a +4.0 ypp margin (WAS QB Daniels did get hurt). They're taking on an Arizona team off their best win of the season as they upset the Cowboys on MNF. The Cardinals are better than their 3-5 record as all five losses have come by 4 points or less. Seattle won the first matchup 23-20 on the road as 1-point road favorites.

**Detroit 30 WASHINGTON 20.** The Detroit Lions are 12-0 ATS off a loss covering by 12.8 points per game. They had their worst performance of the season on Sunday losing outright to the Vikings as 9.5-point home favorites. On the other side, Washington's season is done with QB Daniels out. The Commanders have lost four straight and have failed to cover four straight with each of the last three coming by at least 21 points. We like the Lions who also have revenge for a playoff upset loss to the Commanders.

**L.A. Rams 27 SAN FRANCISCO 22.** The Rams have revenge for losing to the 49ers 26-23 in OT back on October 2nd. The Rams were favored by 8 points and fumbled at the goal line. They should be the fresher team as two weeks ago they had a bye and then they easily dispatched the Saints as 14-point favorites Sunday. Meanwhile, the 49ers have been on the road four of the last five weeks and are playing their 10th straight week. The Rams are No. 3 in ypp margin (+1.1) and No. 3 in DVOA.

**L.A. CHARGERS 25 Pittsburgh 21.** Inside-out handicap here. The Steelers come in off an upset win over the Colts. It was misleading as they were out-gained 368-225 and were -1.3 in ypp margin. Pittsburgh was +5 in turnovers. Meanwhile, the Chargers had a misleading 7-point win over the Titans. It should have been worse as Los Angeles had a 393-206 yard edge. Tennessee got a 24-yard interception return TD and a 67-yard punt return TD in the game. The Chargers did lose LT Joe Alt for the season and they are just 1-5-1 ATS in their last seven games. We still think they are the better team (+0.5 in ypp margin vs -0.4) but wonder if the Steelers will have as many fans in the stands.

**Monday, November 10th**

**GREEN BAY 25 Philadelphia 23.** Saving the best game for last in Week 11 as this could be a NFC playoff game down the line. The Eagles come in off the bye but are still -0.1 in ypp margin despite their 6-2 record. The Packers were probably looking ahead to this game as they suffered an upset loss to the Panthers on Sunday as 13-point home favorites. The Packers have covered just once in their last six games. They are No. 2 in ypp margin. Not sure if we will be heavily involved in a side. Since it is the MNF game, we could be interested in the Eagles being a 2nd leg of a teaser at +8.5 or better and we do lean OVER.

**Byes: Cincinnati, Dallas, Kansas City and Tennessee**

**Week 9 Trends**

	Favorites-Dogs
Straight Up	8-6
ATS	5-8-1
	Home-Away
Straight Up	4-10
ATS	4-9-1
	Totals (O/U)
Over-Under	7-7

**Season To-Date**

	Favorites-Dogs
Straight Up	91-41-1..2 pick-em's
ATS	71-60-2
	Home-Away
Straight Up	71-58-1
ATS	64-64-2
	Totals (O/U)
Over-Under	72-60-3



# 2025 NFL Schedules with Logs

## Arizona (SU: 3-5, ATS: 3-5, O/U: 4-4)

Date	Opponent	Line	Score	ATS/O/U
9/7	at New Orleans	-5*	20-13 W	u44
9/14	Carolina	-7	27-22 L	o45
9/21	at San Francisco	+1*	15-16 W	u44
9/25	Seattle	+1	20-23 L	u44
10/5	Tennessee	-7*	21-22 L	o41
10/12	at Indianapolis	-8*	27-31 W	o46
10/19	Green Bay	+7	23-27 W	o44
10/26				
11/3	at Dallas	+3	27-17 W	u53
11/9	at Seattle			
11/16	San Francisco			
11/23	Jacksonville			
11/30	at Tampa Bay			
12/7	L.A. Rams			
12/14	at Houston			
12/21	Atlanta			
12/28	at Cincinnati			
1/4	at L.A. Rams			

## Atlanta (SU: 3-5, ATS: 4-4, O/U: 2-5-1)

Date	Opponent	Line	Score	ATS/O/U
9/7	at Tampa Bay	PK	20-23 L	u47
9/14	at Minnesota	+3	22-6 W	u44
9/21	at Carolina	-4*	0-30 L	u44
9/28	Washington	-2*	34-27 W	o43
10/5				
10/13	Buffalo	+3*	24-14 W	u49
10/19	at San Francisco	-1	10-20 L	u47
10/26	Miami	-7	10-34 L	p44
11/2	at New England	+5*	23-24 W	o45
11/9	† Indianapolis			
11/16	Carolina			
11/23	at New Orleans			
11/30	at N.Y. Jets			
12/7	Seattle			
12/11	at Tampa Bay			
12/21	at Arizona			
12/29	L.A. Rams			
1/4	New Orleans			

## Baltimore (SU: 3-5, ATS: 3-5, O/U: 6-2)

Date	Opponent	Line	Score	ATS/O/U
9/7	at Buffalo	-1	40-41 L	o51
9/14	Cleveland	-12*	41-17 W	o46
9/22	Detroit	-4*	30-38 L	o54
9/28	at Kansas City	-2*	20-37 L	o48
10/5	Houston	+2*	10-44 L	o41
10/12	L.A. Rams	+7	3-17 L	u43
10/19				
10/26	Chicago	-2*	30-16 W	o45
10/30	at Miami	-7*	28-6 W	u51
11/9	at Minnesota			
11/16	at Cleveland			
11/23	N.Y. Jets			
11/27	Cincinnati			
12/7	Pittsburgh			
12/14	at Cincinnati			
12/21	New England			
12/28	Green Bay			
1/4	at Pittsburgh			

## Buffalo (SU: 6-2, ATS: 4-4, O/U: 4-4)

Date	Opponent	Line	Score	ATS/O/U
9/7	Baltimore	+1	41-40 W	o51
9/14	at N.Y. Jets	-5*	30-10 W	u47
9/18	Miami	-11	31-21 L	o50
9/28	New Orleans	-14*	31-19 L	o49
10/5	New England	-7*	20-23 L	u49
10/13	at Atlanta	-3*	14-24 L	u49
10/19				
10/26	at Carolina	-7*	40-9 W	o48
11/2	Kansas City	+2*	28-21 W	u53
11/9	at Miami			
11/16	Tampa Bay			
11/20	at Houston			
11/30	at Pittsburgh			
12/7	Cincinnati			
12/14	at New England			
12/21	at Cleveland			
12/28	Philadelphia			
1/4	N.Y. Jets			

## Carolina (SU: 5-4, ATS: 6-3, O/U: 5-4)

Date	Opponent	Line	Score	ATS/O/U
9/7	at Jacksonville	+4*	10-26 L	u45
9/14	at Arizona	+7	22-27 W	u45
9/21	at Atlanta	+4*	30-40 W	u44
9/28	at New England	+5*	13-42 L	o42
10/5	Miami	+1	27-24 W	o44
10/12	Dallas	+3	30-27 W	o46
10/19	at N.Y. Jets	-1	13-6 W	u40
10/26	Buffalo	+7*	9-40 L	o48
11/2	at Green Bay	+13	16-13 W	u43
11/9	at New Orleans			
11/16	at Atlanta			
11/24	at San Francisco			
11/30	L.A. Rams			
12/7				
12/14	at New Orleans			
12/21	Tampa Bay			
12/28	Seattle			
1/4	at Tampa Bay			

## Chicago (SU: 5-3, ATS: 5-3, O/U: 5-2-1)

Date	Opponent	Line	Score	ATS/O/U
9/8	Minnesota	PK	24-27 L	o43
9/14	at Detroit	+6*	21-52 L	u46
9/21	Dallas	+1	31-14 W	o40
9/28	at Las Vegas	+2	25-24 W	o47
10/5				
10/13	at Washington	+5*	25-24 W	p49
10/19	New Orleans	-3*	26-14 W	o43
10/26	at Baltimore	+2	16-30 L	o45
11/2	at Cincinnati	-3	47-42 W	o51
11/9	N.Y. Giants			
11/16	at Minnesota			
11/23	Pittsburgh			
11/28	at Philadelphia			
12/7	at Green Bay			
12/14	Cleveland			
12/21	Green Bay			
12/28	at San Francisco			
1/4	at Detroit			

## Cincinnati (SU: 3-6, ATS: 3-6, O/U: 7-2)

Date	Opponent	Line	Score	ATS/O/U
9/7	at Cleveland	-4*	17-16 L	u48
9/14	at Jacksonville	-3*	31-27 W	o49
9/21	at Minnesota	-3*	10-48 L	o42
9/28	at Denver	+7*	3-28 L	u44
10/5	Detroit	+9*	24-37 L	u49
10/12	at Green Bay	+14	18-27 W	o44
10/16	Pittsburgh	+5*	33-31 W	o45
10/26	N.Y. Jets	-5*	38-39 L	u44
11/3	Chicago	+3	42-47 L	o51
11/16	at Pittsburgh			
11/23	New England			
11/27	at Baltimore			
12/7	at Buffalo			
12/14	Baltimore			
12/21	at Miami			
12/28	Arizona			
1/4	Cleveland			

## Cleveland (SU: 2-6, ATS: 3-5, O/U: 4-4)

Date	Opponent	Line	Score	ATS/O/U
9/7	Cincinnati	+4*	16-17 W	u48
9/14	at Baltimore	+12*	17-41 L	o48
9/21	Green Bay	+7*	13-10 W	u40
9/28	at Detroit	+10	10-34 L	u44
10/5	† Minnesota	+3*	17-21 L	o35
10/12	at Pittsburgh	+6*	9-23 L	u38
10/19	Miami	-2*	31-6 W	o34
10/26	at New England	+7	13-32 L	o40
11/2				
11/9	at N.Y. Jets			
11/16	Baltimore			
11/23	at Las Vegas			
11/30	San Francisco			
12/7	Tennessee			
12/14	at Chicago			
12/21	Buffalo			
12/28	Pittsburgh			
1/4	Tennessee			

## Dallas (SU: 3-5-1, ATS: 4-5, O/U: 6-3)

Date	Opponent	Line	Score	ATS/O/U
9/4	at Philadelphia	+8	20-24 W	u47
9/14	N.Y. Giants-ot	-4*	40-37 L	u44
9/21	at Chicago	-1	14-31 L	u50
9/28	Green Bay	+6*	40-40 W	o46
10/5	at N.Y. Jets	+1*	37-22 W	o47
10/12	at Carolina	-3	27-30 L	o46
10/19	Washington	-1*	44-22 W	o55
10/26	at Denver	+4	24-44 L	o52
11/3	Arizona	-3	17-27 L	u51
11/9				
11/17	at Las Vegas			
11/23	Philadelphia			
11/27	Kansas City			
12/4	at Detroit			
12/14	Minnesota			
12/21	L.A. Chargers			
12/25	at Washington			
1/4	at Kansas City			

## Denver (SU: 7-2, ATS: 4-4-1, O/U: 3-6)

Date	Opponent	Line	Score	ATS/O/U
9/7	Tennessee	-8*	20-12 L	u42
9/14	at Indianapolis	-1	28-29 L	u43
9/21	at L.A. Chargers	+3	20-23 P	u45
9/28	Cincinnati	-7	28-3 W	u44
10/5	at Philadelphia	+4	21-17 W	u44
10/12	N.Y. Jets	-7	13-11 L	u43
10/19	N.Y. Giants	-8*	33-32 L	u41
10/26	Dallas	-4	44-24 W	o52
11/2	at Houston	+2*	18-15 W	u41
11/6	Las Vegas			
11/16	Kansas City			
11/23				
11/30	at Washington			
12/7	at Las Vegas			
12/14	Green Bay			
12/21	Jacksonville			
12/25	at Kansas City			
1/4	at Kansas City			

## Detroit (SU: 5-3, ATS: 5-3, O/U: 4-4)

Date	Opponent	Line	Score	ATS/O/U
9/7	at Green Bay	+1	13-27 L	u48
9/14	Chicago	-6*	52-21 W	o46
9/22	at Baltimore	+4*	38-30 W	o54
9/28	Cleveland	-10	34-10 W	u44
10/5	at Cincinnati	-9*	37-24 W	o49
10/12	at Kansas City	+2*	17-30 L	u51
10/20	Tampa Bay	-6	24-9 W	o47
10/26				
11/2	Minnesota	-9*	24-27 L	u45
11/9	at Washington			
11/16	at Philadelphia			
11/23	N.Y. Giants			
11/27	Green Bay			
12/4	Dallas			
12/14	at L.A. Rams			
12/21	Pittsburgh			
12/25	at Minnesota			
1/4	at Chicago			

## Green Bay (SU: 5-2-1, ATS: 3-5, O/U: 4-4)

Date	Opponent	Line	Score	ATS/O/U
9/7	Detroit	-1	27-13 W	u48
9/11	Washington	-3	27-18 W	u48
9/21	at Cleveland	-7*	10-13 L	u40
9/28	at Dallas-ot	-6*	40-40 L	o46
10/5				
10/12	Cincinnati	-14	27-18 L	o44
10/19	at Arizona	-7	27-23 L	o44
10/26	at Pittsburgh	-2*	35-25 W	o45
11/2	Carolina	-13	13-16 L	u43
11/10	Philadelphia			
11/16	at N.Y. Giants			
11/23	Minnesota			
11/30	at Carolina			
12/7	Chicago			
12/14	at Denver			
12/20	Chicago			
12/28	Baltimore			
1/4	at Minnesota			

## Houston (SU: 3-5, ATS: 3-5, O/U: 2-5-1)

Date	Opponent	Line	Score	ATS/O/U
9/7	at L.A. Rams	+3	9-14 L	u43
9/15	Tampa Bay	-2*	19-20 L	u42
9/21	at Jacksonville	+1*	10-17 L	u42
9/28	Tennessee	-7*	26-0 W	u39
10/5	at Baltimore	-2*	44-10 W	o41
10/12				
10/20	at Seattle	+3	19-27 L	o41
10/26	San Francisco	-3	26-15 W	p41
11/2	Denver	-2*	15-18 L	u41
11/9	Jacksonville			
11/16	at Tennessee			
11/20	Buffalo			
11/30	at Indianapolis			
12/7	at Kansas City			
12/14	Arizona			
12/21	Las Vegas			
12/28	at L.A. Chargers			
1/4	Indianapolis			

## Indianapolis (SU: 7-2, ATS: 6-3, O/U: 5-4)

Date	Opponent	Line	Score	ATS/O/U
9/7	Miami	-1	33-8 W	u47
9/14	Denver	+1	29-28 W	u43
9/21	at Tennessee	-6*	41-20 W	o42
9/28	at L.A. Rams	+3*	20-27 L	u49
10/5	Las Vegas	-7	40-6 W	u46
10/12	Arizona	-8*	31-27 L	o46
10/19	at L.A. Chargers	+2*	38-24 W	o49
10/26	Tennessee	-15	38-14 W	o47
11/2	at Pittsburgh	-3	20-27 L	u52
11/9	at Atlanta			
11/16				
11/23	at Kansas City			
11/30	Houston			
12/7	at Jacksonville			
12/14	at Seattle			
12/22	San Francisco			
12/28	Jacksonville			
1/4	at Houston			

## Jacksonville (SU: 5-3, ATS: 4-3-1, O/U: 4-4)

9/7	Carolina	-4*	26-10 W	u45
9/14	at Cincinnati	+3*	27-31 L	o49
9/21	Houston	-1*	17-10 W	u46
9/28	San Francisco	+3	26-21 W	o42
10/6	Kansas City	+3	31-28 W	u45
10/12	Seattle	+1	12-20 L	o47
10/19	at L.A. Rams	+3	7-35 L	u44
10/26				
11/2	at Las Vegas-ot	-1	30-29 P	o43
11/9	at Houston			
11/16	L.A. Chargers			
11/23	at Arizona			
11/30	Tennessee			
12/7	Indianapolis			
12/14	N.Y. Jets			
12/21	at Denver			
12/28	at Indianapolis			



# 2025 CFB Schedules with Logs

## Air Force (SU: 2-6, ATS: 3-5, O/U: 6-21)

Date	Opponent	Line	Score	ATS/O/U
8/30	Bucknell	-32	49-13 W	o54'
9/6				
9/13	at Utah State	-4	30-49 L	o51'
9/20	Boise State	+10	37-49 L	o52
9/27	Hawaii	-6	35-44 L	o52
10/4	at Navy	+13	31-34 W	o51
10/11	at UNLV	+6	48-51 W	o65'
10/18	Wyoming	-3	24-21 L	u57
10/25				
11/1	Army	+1	17-20 L	u48
11/8	at San Jose State			
11/15	at Connecticut			
11/22	New Mexico			
11/28	at Colorado State			

## Akron (SU: 3-6, ATS: 4-5, O/U: 5-41)

Date	Opponent	Line	Score	ATS/O/U
8/28	Wyoming	+5	0-10 L	u48
9/6	at Nebraska	+33	0-68 L	o47'
9/13	at UAB	+12	28-31 W	o58'
9/20	Duquesne	-10	51-7 W	o51
9/27	at Toledo	+21	3-45 L	u49
10/4	Central Michigan	+7	28-22 W	o47
10/11	Miami (OH)	+11	7-20 L	u47
10/18	at Ball State	-2	28-42 L	o44
10/25	at Buffalo	+10	24-16 W	u49
11/1				
11/4	Massachusetts			
11/11	Kent State			
11/18	at Bowling Green			
11/29				

## Alabama (SU: 7-1, ATS: 5-2-1, O/U: 4-3-1)

Date	Opponent	Line	Score	ATS/O/U
8/30	at Florida State	-13	17-31 L	o47'
9/6	UL-Monroe	-34	73-0 W	o49
9/13	Wisconsin	-18	38-14 W	o45'
9/20				
9/27	at Georgia	+2	24-21 W	u53'
10/4	Vanderbilt	-12	30-14 W	u57'
10/11	at Missouri	-3	27-24 P	p51
10/18	Tennessee	-9	37-20 W	u61
10/25	at South Carolina	-12	29-22 L	o48
11/1				
11/8	LSU			
11/15	Oklahoma			
11/22	Eastern Illinois			
11/29	at Auburn			

## Appalachian St (SU: 4-4, ATS: 4-4, O/U: 4-41)

Date	Opponent	Line	Score	ATS/O/U
8/29	† Charlotte	-3	34-11 W	u48'
9/6	Lindenwood	-31	20-13 L	u56'
9/13	at Southern Miss	-3	22-38 L	o55'
9/20				
9/27	at Boise State	+17	14-47 L	o59'
10/4	Oregon State	-2	27-23 W	u53'
10/11	at Georgia State	-3	41-20 W	o55'
10/18	Coastal Carolina	-10	37-45 L	o48'
10/25	at Old Dominion	+13	21-24 W	u62
11/1				
11/6	Georgia Southern			
11/15	at James Madison			
11/22	Marshall			
11/29	Arkansas State			

## Arizona (SU: 5-3, ATS: 5-3, O/U: 4-41)

Date	Opponent	Line	Score	ATS/O/U
8/30	Hawaii	-15	40-6 W	u55
9/6	Weber State	-32	48-3 W	u56'
9/12	Kansas State	+1	23-17 W	u56'
9/20				
9/27	at Iowa State	+4	14-39 L	o48
10/4	Oklahoma State	-21	41-13 W	u57
10/11	BYU-2ot	+2	27-33 L	o46'
10/18	at Houston	-2	28-31 L	o47'
10/25				
11/1	at Colorado	-3	52-17 W	o52'
11/8	Kansas			
11/15	at Cincinnati			
11/22	Baylor			
11/28	at Arizona State			

## Arizona State (SU: 6-3, ATS: 5-4, O/U: 2-71)

Date	Opponent	Line	Score	ATS/O/U
8/30	Northern Arizona	-30	38-19 L	o52'
9/6	at Mississippi St	-6	20-24 L	u59
9/13	Texas State	-18	34-15 W	u61
9/20	at Baylor	+2	27-24 W	u60'
9/26	TCU	-2	27-24 W	u54'
10/4				
10/11	at Utah	+9	10-42 L	o42'
10/18	Texas Tech	+7	26-22 W	u52'
10/25	Houston	-7	16-24 L	u46'
11/1	at Iowa State	+7	24-19 W	u48'
11/8				
11/15	West Virginia			
11/22	at Colorado			
11/28	Arizona			

## Arkansas (SU: 2-7, ATS: 3-6, O/U: 7-21)

Date	Opponent	Line	Score	ATS/O/U
8/30	Alabama A&M	-48	52-7 L	u64'
9/6	Arkansas State	-23	56-14 W	o62
9/13	at Ole Miss	+3	35-41 L	o60'
9/20	at Memphis	-7	31-32 L	o59'
9/27	Notre Dame	+5	13-56 L	o63'
10/4				
10/11	at Tennessee	+10	31-34 W	u68'
10/18	Texas A&M	+7	42-45 W	o57'
10/25	Auburn	-2	24-33 L	o55'
11/1	Mississippi St	-5	35-38 L	o66'
11/8				
11/15	at LSU			
11/22	at Texas			
11/29	Missouri			

## Arkansas State (SU: 5-4, ATS: 6-3, O/U: 2-71)

Date	Opponent	Line	Score	ATS/O/U
8/30	SE Missouri St	-14	42-24 W	o60
9/6	at Arkansas	+23	14-56 L	o62
9/13	Iowa State	+21	16-24 W	u56
9/20	at Kennesaw St	-4	21-28 L	u57
9/27	at UL-Monroe	+1	16-28 L	u55
10/4	Texas State	+14	31-30 W	u64
10/11				
10/14	at South Alabama	+9	15-14 W	u57'
10/25	Georgia Southern	+1	34-24 W	u59'
11/1	at Troy	+7	23-10 W	u52'
11/8	Southern Miss			
11/15				
11/20	UL-Lafayette			
11/29	at Appalachian State			

## Army (SU: 4-4, ATS: 4-4, O/U: 2-61)

Date	Opponent	Line	Score	ATS/O/U
8/29	Tarleton St-2ot	-14	27-30 L	o47
9/6	at Kansas State	+17	24-21 W	u48
9/13				
9/20	North Texas-ot	+2	38-45 L	o50
9/25	at East Carolina	+3	6-28 L	u53'
10/4	at UAB	-6	31-13 W	u56
10/11	Charlotte	-17	24-7 L	u45
10/18	at Tulane	+10	17-24 W	u44
10/25				
11/1	at Air Force	-1	20-17 W	u48
11/8	Temple			
11/15				
11/22	Tulsa			
11/28	at UTSA			
12/6				
12/13	† Navy			

## Auburn (SU: 4-5, ATS: 3-6, O/U: 2-71)

Date	Opponent	Line	Score	ATS/O/U
8/29	at Baylor	-1	38-24 W	o57
9/6	Ball State	-42	42-3 L	u52'
9/13	South Alabama	-26	31-15 L	u56'
9/20	at Oklahoma	+6	17-24 L	u47
9/27	at Texas A&M	+6	10-16 W	u51'
10/4				
10/11	Georgia	+4	10-20 L	u46'
10/18	Missouri-2ot	+1	17-23 L	u43'
10/25	at Arkansas	+2	33-24 W	o55'
11/1	Kentucky	-12	3-10 L	u44'
11/8	at Vanderbilt			
11/15				
11/22	Mercer			
11/29	Alabama			

## Ball State (SU: 3-5, ATS: 5-3, O/U: 3-51)

Date	Opponent	Line	Score	ATS/O/U
8/30	at Purdue	+16	0-31 L	u48'
9/6	at Auburn	+42	3-42 W	u52'
9/13	New Hampshire	-3	34-29 W	o46
9/20	at Connecticut	+21	25-31 W	o52'
9/27				
10/4	Ohio	+14	20-14 W	u52
10/11	at Western Mich	+9	0-42 L	u43
10/18	Akron	+2	42-28 W	o44
10/25	at Mo. Illinois	+6	7-21 L	u42
11/1				
11/5	Kent State			
11/15	Eastern Michigan			
11/22	at Toledo			
11/29	at Miami (OH)			

## Baylor (SU: 5-4, ATS: 2-7, O/U: 5-41)

Date	Opponent	Line	Score	ATS/O/U
8/29	Auburn	+1	24-38 L	o57
9/6	at SMU-2ot	+3	48-45 W	o65'
9/13	Samford	-51	42-7 L	u64'
9/20	Arizona State	-2	24-27 L	u58'
9/27	at Oklahoma St	-21	45-27 L	o58'
10/4	Kansas State	-4	35-34 L	o60'
10/11				
10/18	at TCU	+3	36-42 L	o66'
10/25	at Cincinnati	+3	20-41 L	u68'
11/1	UCF	-3	30-3 W	u58
11/8				
11/15	Utah			
11/22	at Arizona			
11/29	Houston			

## Boise State (SU: 6-3, ATS: 6-2-1, O/U: 5-41)

Date	Opponent	Line	Score	ATS/O/U
8/28	at USF	-4	7-34 L	u61
9/5	East Washington	-33	51-14 W	o60'
9/13				
9/20	at Air Force	-10	49-37 W	o52
9/27	Appalachian St	-17	47-14 W	o59'
10/4	at Notre Dame	+21	7-28 W	u62'
10/11	New Mexico	-14	41-25 W	o58'
10/18	UNLV	-13	56-31 W	o60
10/24	at Nevada	-21	24-3 P	u51
11/1	Fresno State	-17	7-30 L	u48
11/8				
11/15	at San Diego State			
11/22	Colorado State			
11/28	at Utah State			

## Boston College (SU: 1-8, ATS: 4-5, O/U: 6-31)

Date	Opponent	Line	Score	ATS/O/U
8/30	Fordham	-35	66-10 W	o53'
9/6	at Mich St-2ot	+3	40-42 L	o45'
9/13	at Stanford	-14	20-30 L	o45
9/20				
9/27	California	-6	24-28 L	u54
10/4	at Pittsburgh	+7	7-48 L	u54'
10/11	Clemson	+14	10-41 L	u54'
10/18	Connecticut	+2	23-38 L	o58
10/25	at Louisville	+25	24-38 W	o58
11/1	Notre Dame	+31	10-25 W	u55'
11/8	SMU			
11/15	Georgia Tech			
11/22				
11/29	at Syracuse			

## Bowling Green (SU: 3-6, ATS: 4-5, O/U: 4-51)

Date	Opponent	Line	Score	ATS/O/U
8/28	Lafayette	-21	26-7 L	u53'
9/6	at Cincinnati	+22	20-34 W	u53'
9/13	Liberty	+6	23-13 W	u56
9/20	at Louisville	+26	17-40 W	o51
9/27	at Ohio	+7	20-35 L	o50
10/4				
10/11	Toledo	+11	28-23 W	o45'
10/18	Central Michigan	-3	6-27 L	u44
10/25	at Kent State	-7	21-24 L	u48
11/1	Buffalo	-2	3-28 L	u44
11/8	at Eastern Michigan			
11/15				
11/18	Akron			
11/25	at Massachusetts			

## Buffalo (SU: 5-4, ATS: 3-5-1, O/U: 4-51)

Date	Opponent	Line	Score	ATS/O/U
8/28	at Minnesota	+16	10-23 W	u42'
9/6	at Saint Francis	-38	45-6 W	o48'
9/13	at Kent State	-24	31-28 L	o46'
9/20	Troy	-5	17-21 L	u51
9/27	Connecticut	+3	17-20 P	u51
10/4	Eastern Mich-ot	-9	31-30 L	o53'
10/11				
10/18	at Massachusetts	-16	28-21 L	o47'
10/25	Akron	-10	16-24 L	u49
11/1	at Bowling Green	+2	28-3 W	u44
11/8				
11/12	at Central Michigan			
11/19	Miami (OH)			
11/28	Ohio			

## BYU (SU: 6-0, ATS: 6-2, O/U: 4-41)

Date	Opponent	Line	Score	ATS/O/U
8/30	Portland State	-43	69-0 W	o62'
9/6	Stanford	-20	27-3 W	u40
9/13				
9/20	at East Carolina	-6	34-13 W	u50
9/27	at Colorado	-6	24-21 L	u48
10/3	West Virginia	-20	38-24 L	o46'
10/11	at Arizona-2ot	-2	33-27 W	u46
10/18	Utah	+4	24-21 W	u49'

**Georgia (SU: 7-1, ATS: 3-5, O/U: 3-4-1)**

Date	Opponent	Line	Score	ATS/O/U
8/30	Marshall	-38'	45-7 L	o51'
9/6	Austin Peay	-46'	28-6 L	u56'
9/13	at Tennessee-ot	-3'	44-41 L	o50'
9/20				
9/27	Alabama	-2'	21-24 L	u53'
10/4	Kentucky	-20'	35-14 W	p49
10/11	at Auburn	-40'	20-10 W	u46'
10/18	Ole Miss	-7'	43-35 W	o56'
10/25				
11/1	† Florida	-7	24-20 L	u50'
11/8	at Mississippi State			
11/15	Texas			
11/22	Charlotte			
11/28	† Georgia Tech			

**Georgia Southern (SU: 3-5, ATS: 3-4-1, O/U: 6-2)**

Date	Opponent	Line	Score	ATS/O/U
8/30	at Fresno State	+1	14-42 L	o49'
9/6	at USC	+29	20-59 L	o62
9/13	Jacksonville St	-3	41-34 W	o58'
9/20	Maine	-23	45-17 W	o57'
9/27	at James Madison	+15	10-35 L	u54'
10/4				
10/9	Southern Miss	+3	35-38 P	o60
10/18	Georgia State	-6'	41-24 W	o59
10/25	at Arkansas State-1		24-34 L	u59'
11/1				
11/6	at Appalachian State			
11/15	Coastal Carolina			
11/22	Old Dominion			
11/29	at Marshall			

**Georgia State (SU: 1-7, ATS: 1-7, O/U: 5-3)**

Date	Opponent	Line	Score	ATS/O/U
8/30	at Ole Miss	+33'	7-63 L	o60'
9/6	Memphis	+14'	16-38 L	u57'
9/13	Murray State	-32	37-21 L	u63'
9/20	at Vanderbilt	+28	21-70 L	o53
9/27				
10/4	James Madison	+20	7-14 W	u52'
10/11	Appalachian St	+3	20-41 L	o55'
10/18	at Ga Southern	+6'	24-41 L	o59
10/23	South Alabama	+6	31-38 L	o54
11/1				
11/8	at Coastal Carolina			
11/15	Marshall			
11/22	at Troy			
11/29	at Old Dominion			

**Georgia Tech (SU: 8-1, ATS: 6-3, O/U: 5-4)**

Date	Opponent	Line	Score	ATS/O/U
8/29	at Colorado	-3'	27-20 W	u50
9/6	Gardner-Webb	-37'	59-12 W	o60
9/13	Clemson	+3	24-21 W	o50'
9/20	Temple	-24'	45-24 L	o53
9/27	at Wake Forest-ot	-13	30-29 L	o53
10/4				
10/11	Virginia Tech	-14	35-20 W	u55'
10/18	at Duke	+3'	27-18 W	u61
10/25	Syracuse	-17	41-16 W	o52
11/1	at NC State	-4'	36-48 L	o59
11/8				
11/15	at Boston College			
11/22	Pittsburgh			
11/28	† Georgia			

**Hawaii (SU: 6-3, ATS: 6-3, O/U: 4-5)**

Date	Opponent	Line	Score	ATS/O/U
8/23	Stanford	-2'	23-20 W	u50
8/30	at Arizona	+15'	6-40 L	u55
9/6	Sam Houston St	-7	37-20 W	o48'
9/13	Portland State	-36	23-3 L	u54'
9/20	Fresno State	+2'	21-23 W	u47'
9/27	at Air Force	+6'	44-35 W	o52
10/4				
10/11	Utah State	+1'	44-26 W	o56'
10/18	at Colorado State+2'		31-19 W	u54
10/25				
11/1	at San Jose State +2'		38-45 L	o55'
11/8	San Diego State			
11/15				
11/21	at UNLV			
11/29	Wyoming			

**Houston (SU: 7-2, ATS: 6-3, O/U: 6-3)**

Date	Opponent	Line	Score	ATS/O/U
8/28	Steph. F. Austin	-24	27-0 W	u54'
9/6	at Rice	-13'	35-9 W	o38'
9/12	Colorado	-4	36-20 W	o45'
9/20				
9/27	at Oregon St-ot	-12	27-24 L	o48
10/4	Texas Tech	+13	11-35 L	u51'
10/11	at Oklahoma St	-14'	39-17 W	o47'
10/18	Arizona	+2	31-28 W	o47'
10/25	at Arizona State	+7'	24-16 W	u46'
11/1	West Virginia	-13'	35-45 L	o48'
11/7	at UCF			
11/15				
11/22	TCU			
11/29	at Baylor			

**Illinois (SU: 6-3, ATS: 6-3, O/U: 5-4)**

Date	Opponent	Line	Score	ATS/O/U
8/29	Western Illinois	-48'	52-3 W	u62'
9/6	at Duke	-2'	45-19 W	o49
9/13	Western Mich	-27'	38-0 W	u50'
9/20	at Indiana	+7	10-63 L	o51'
9/27	USC	+6'	34-32 W	o61'
10/4	at Purdue	-7	43-27 W	o54'
10/11	Ohio State	+14'	16-34 L	u51'
10/18				
10/25	at Washington	+3	25-42 L	o54'
11/1	Rutgers	-13	35-13 W	u62'
11/8				
11/15	Maryland			
11/22	at Wisconsin			
11/29	Northwestern			

**Indiana (SU: 9-0, ATS: 6-3, O/U: 6-3)**

Date	Opponent	Line	Score	ATS/O/U
8/30	Old Dominion	-23'	27-14 L	u53'
9/6	Kennesaw State	-35'	56-9 W	o51'
9/12	Indiana State	-47	73-0 W	o60'
9/20	Illinois	-7	63-10 W	o51'
9/27	at Iowa	-9	20-15 L	u47'
10/4				
10/11	at Oregon	+7	30-20 W	u51
10/18	Michigan State	-26	38-13 L	u49
10/25	UCLA	-26'	56-6 W	o53
11/1	at Maryland	-21'	55-10 W	o50'
11/8	at Penn State			
11/15	Wisconsin			
11/22				
11/28	at Purdue			

**Iowa (SU: 6-2, ATS: 5-2-1, O/U: 4-4)**

Date	Opponent	Line	Score	ATS/O/U
8/30	Albany	-39'	34-7 L	u48'
9/6	at Iowa State	+3	13-16 P	u45
9/13	Massachusetts	-35	47-7 W	o43
9/19	at Rutgers	-2	38-28 W	o46'
9/27	Indiana	+9	15-20 W	u47'
10/4				
10/11	at Wisconsin	-5'	37-0 W	u37'
10/18	Penn State	-3	25-24 L	o41'
10/25	Minnesota	-7'	41-3 W	o39
11/1				
11/8	Oregon			
11/15	at USC			
11/22	Michigan State			
11/28	at Nebraska			

**Iowa State (SU: 5-4, ATS: 3-5-1, O/U: 4-5)**

Date	Opponent	Line	Score	ATS/O/U
8/23	† Kansas State	+3	24-21 W	u51'
8/30	South Dakota	-16	55-7 W	o47'
9/6	Iowa	-3	16-13 P	u43
9/13	at Arkansas State	-21	24-16 L	u56
9/20				
9/27	Arizona	-4	39-14 W	o48
10/4	at Cincinnati	+1	30-38 L	o55'
10/11	at Colorado	-3	17-24 L	u52
10/18				
10/25	BYU	-2'	27-41 L	o49
11/1	Arizona State	-7'	19-24 L	u48'
11/8	at TCU			
11/15				
11/22	Kansas			
11/29	at Oklahoma State			

**Jacksonville State (SU: 5-3, ATS: 3-5, O/U: 5-3)**

Date	Opponent	Line	Score	ATS/O/U
8/28	at UCF	+20'	10-17 W	u53
9/6	Liberty	+6	34-24 W	o50'
9/13	at Ga Southern	+3	34-41 L	o58'
9/20	Murray State	-35'	45-10 L	u60'
9/27	at Southern Miss +4		25-42 L	o55'
10/4				
10/9	at Sam Hou St	-7	29-27 L	o53'
10/15	Delaware	+3	38-25 W	o56'
10/25				
10/29	at Middle Tenn	-4	24-21 L	u54'
11/8	at UTEP			
11/15	Kennesaw State			
11/22	at FIU			
11/29	Western Kentucky			

**James Madison (SU: 7-1, ATS: 6-2, O/U: 2-6)**

Date	Opponent	Line	Score	ATS/O/U
8/30	Weber State	-26'	45-10 W	u55'
9/6	at Louisville	+15'	14-28 W	u56'
9/13				
9/20	at Liberty	-7'	31-13 W	u46'
9/27	Georgia Southern	-15	35-10 W	u54'
10/4	at Georgia State	-20	14-7 L	u52'
10/11	UL-Lafayette	-18'	24-14 L	u54
10/18	Old Dominion	-3	63-27 W	o47'
10/25				
10/28	at Texas State	-7	52-20 W	o55'
11/8	at Marshall			
11/15	Appalachian State			
11/22	Washington State			
11/29	at Coastal Carolina			

**Kansas (SU: 5-4, ATS: 3-6, O/U: 5-4)**

Date	Opponent	Line	Score	ATS/O/U
8/23	Fresno State	-14	31-7 W	u50
8/29	Wagner	-45'	46-7 L	u57
9/6	at Missouri	+5'	31-42 L	o51
9/13				
9/20	West Virginia	-12'	41-10 W	u54'
9/27	Cincinnati	-5'	34-37 L	o56
10/4	at UCF	-4	27-20 W	u54
10/11	at Texas Tech	+13'	17-42 L	o58'
10/18				
10/25	Kansas State	-3'	17-42 L	o55'
11/1	Oklahoma State	-24'	38-21 L	o55
11/8	at Arizona			
11/15				
11/22	at Iowa State			
11/28	Utah			

**Kansas State (SU: 4-5, ATS: 4-5, O/U: 6-3)**

Date	Opponent	Line	Score	ATS/O/U
8/23	† Iowa State	-3	21-24 L	u51'
8/30	North Dakota	-27'	38-35 L	o55'
9/6	Army	-17	21-24 L	u48
9/12	at Arizona	-1'	17-23 L	u56'
9/20				
9/27	UCF	-6	34-20 W	o49
10/4	at Baylor	+4'	34-35 W	o60'
10/11	TCU	+3	41-28 W	o55
10/18				
10/25	at Kansas	+3'	42-17 W	o55'
11/1	Texas Tech	+7	20-43 L	o51'
11/8				
11/15	at Oklahoma State			
11/22	at Utah			
11/29	Colorado			

**Kennesaw State (SU: 6-2, ATS: 6-2, O/U: 3-5)**

Date	Opponent	Line	Score	ATS/O/U
8/29	at Wake Forest	+18'	9-10 W	u51'
9/6	at Indiana	+35'	9-56 L	o51'
9/13	Merrimack	-17'	27-13 L	u47'
9/20	Arkansas State	+4'	28-21 W	u54'
9/27	Middle Tennessee	-6'	24-16 W	u53'
10/4				
10/9	Louisiana Tech	+4'	35-7 W	u47
10/18				
10/21	at FIU	-3	45-26 W	o49
10/28	UTEP	-12	33-20 W	o52'
11/8	at New Mexico State			
11/15	at Jacksonville State			
11/22	Missouri State			
11/29	at Liberty			

**Kent State (SU: 3-5, ATS: 4-4, O/U: 4-4)**

Date	Opponent	Line	Score	ATS/O/U
8/30	Merrimack	-5	21-17 L	u50'
9/6	at Texas Tech	+47'	14-62 L	o60
9/13	Buffalo	+24	28-31 W	o48'
9/20	at Florida State	+45	10-66 L	o56
9/27				
10/4	at Oklahoma	+46'	0-44 L	u53'
10/11	Massachusetts	-1	42-6 W	u50'
10/18	at Toledo	+25'	10-45 L	u48
10/25	Bowling Green	+7'	24-21 W	u48
11/1				
11/5	at Ball State			
11/11	at Akron			
11/19	Central Michigan			
11/28	at Northern Illinois			

**Kentucky (SU: 3-5, ATS: 3-5, O/U: 4-3-1)**

Date	Opponent	Line	Score	ATS/O/U
8/30	Toledo	-10	24-16 L	u50'
9/6	Ole Miss	-8	23-30 W	o51
9/13	Eastern Michigan	-26'	48-23 L	o49'
9/20				
9/27	at South Carolina	+5'	13-35 L	o47
10/4	at Georgia	+20'	14-35 L	p49
10/11				
10/18	Texas-ot	+12	13-16 W	u55
10/25	Tennessee	+7'	34-56 L	u45'
11/1	at Auburn	+12	10-3 W	u44'
11/8	Florida			
11/15	Tennessee Tech			
11/22	at Vanderbilt			
11/29	at Louisville			

**Liberty (SU: 4-4, ATS: 3-5, O/U: 3-5)**

Date	Opponent	Line	Score	ATS/O/U
8/30	Maine	-25'	28-7 L	u51'
9/6	at Jacksonville St-6		24-34 L	o50'
9/13	at Bowling Green	-6	13-23 L	u51
9/20	James Madison	+7'	13-31 L	u46'
9/27	at Old Dominion	+14'	7-21 W	u53'
10/4				
10/8	at UTEP	-2	19-8 W	u46'
10/14	New Mexico St	-11'	30-27 L	u48
10/25				
11/1	Delaware	-3'	59-30 W	o



NC State (SU: 5-4, ATS: 4-5, O/U: 6-3)				
Date	Opponent	Line Score	ATS/O/U	
8/28	East Carolina	-13' 24-17 L	u61'	
9/6	Virginia	-3 35-31 W	o53'	
9/11	at Wake Forest	-7 34-24 W	o52'	
9/20	at Duke	+3 33-45 L	o56'	
9/27	Virginia Tech	-10 21-23 L	u57'	
10/4	Campbell	-42' 56-10 W	o61'	
10/11	at Notre Dame	+24 7-36 L	u59'	
10/18				
10/25	at Pittsburgh	+5 34-53 L	o53'	
11/1	Georgia Tech	+4' 48-36 W	o59'	
11/8				
11/15	at Miami (FL)			
11/21	Florida State			
11/29	North Carolina			

Nebraska (SU: 6-3, ATS: 3-5-1, O/U: 6-3)				
Date	Opponent	Line Score	ATS/O/U	
8/28	† Cincinnati	-6 20-17 L	u50'	
9/6	Akron	-33' 68-0 W	o47'	
9/11	Hou. Christian	-48' 59-7 W	o59'	
9/20	Michigan	+1 27-30 L	o48'	
9/27				
10/4	Michigan State	-12' 38-27 L	o48'	
10/11	at Maryland	-7 34-31 L	o47'	
10/17	at Minnesota	-6' 6-24 L	u47'	
10/25	Northwestern	-7 28-21 P	o44'	
11/1	USC	+4' 17-21 W	u59'	
11/8	at UCLA			
11/15				
11/22	at Penn State			
11/29	Iowa			

Nevada (SU: 1-7, ATS: 3-4-1, O/U: 2-6)				
Date	Opponent	Line Score	ATS/O/U	
8/30	at Penn State	+42' 11-46 W	o54'	
9/6	Sacramento St	-7 20-17 L	u55'	
9/11	Middle Tennessee	-9 13-14 L	u49'	
9/20	at W. Kentucky	+7' 16-31 L	u54'	
9/27				
10/4	at Fresno State	+11' 17-20 W	u45'	
10/11	San Diego State	+6' 10-44 L	o42'	
10/18	at New Mexico	+13' 22-24 W	u49'	
10/24	Boise State	+21 3-24 P	u51'	
11/1				
11/8	at Utah State			
11/15	San Jose State			
11/22	at Wyoming			
11/29	UNLV			

New Mexico (SU: 6-3, ATS: 5-4, O/U: 5-4)				
Date	Opponent	Line Score	ATS/O/U	
8/30	at Michigan	+34' 17-34 W	o49'	
9/6	Idaho State	-18' 32-22 L	u60'	
9/12	at UCLA	+15' 35-10 W	u53'	
9/20				
9/27	New Mexico St	-16' 38-20 W	o53'	
10/3	at San Jose State	+1' 28-35 L	o58'	
10/11	at Boise State	+14' 25-41 L	o58'	
10/18	Nevada	-13' 24-22 L	u49'	
10/25	Utah State	-3 33-14 W	u61'	
11/1	at UNLV	+4 40-35 W	o61'	
11/8				
11/15	Colorado State			
11/22	at Air Force			
11/28	San Diego State			

New Mexico State (SU: 3-5, ATS: 3-5, O/U: 3-5)				
Date	Opponent	Line Score	ATS/O/U	
8/30	Bryant	-19' 19-3 L	u53'	
9/6	Tulsa	+3 21-14 W	u52'	
9/11	at Louisiana Tech	+10 14-49 L	o42'	
9/20				
9/27	at New Mexico	+16' 20-38 L	o53'	
10/2	Sam Houston St	+1' 37-10 W	u52'	
10/11				
10/14	at Liberty	+11' 27-30 W	o48'	
10/22	Missouri State-ot	+2' 17-24 L	u51'	
11/1	at W. Kentucky	+7' 16-35 L	u53'	
11/8	Kennesaw State			
11/15	at Tennessee			
11/22	at UTEP			
11/29	Middle Tennessee			

North Carolina (SU: 3-5, ATS: 5-3, O/U: 2-6)				
Date	Opponent	Line Score	ATS/O/U	
9/1	TCU	+3' 14-48 L	o55'	
9/6	at Charlotte	-14' 20-3 W	u49'	
9/11	Richmond	-24' 41-6 W	u47'	
9/20	at UCF	+7 9-34 L	u46'	
9/27				
10/4	Clemson	+15' 10-38 L	o47'	
10/11				
10/17	at California	+7' 18-21 W	u46'	
10/25	Virginia-ot	+11' 16-17 W	u51'	
10/31	at Syracuse	+1 27-10 W	u45'	
11/8	Stanford			
11/15	at Wake Forest			
11/22	Duke			
11/29	at NC State			

North Texas (SU: 8-1, ATS: 2-7, O/U: 6-3)				
Date	Opponent	Line Score	ATS/O/U	
8/30	Lamar	-27' 51-0 W	u63'	
9/6	at West Mich-ot	-11' 33-30 L	o56'	
9/11	Washington St	-7 59-10 W	o57'	
9/20	at Army-ot	-2' 45-38 W	o50'	
9/27	South Alabama	-13 36-22 W	u63'	
10/4				
10/10	USF	-2' 36-63 L	o68'	
10/18	UTSA	-4 55-17 W	o64'	
10/24	at Charlotte	-25' 54-20 W	o60'	
11/1	Navy	-6' 31-17 W	u68'	
11/8				
11/15	at UAB			
11/22	at Rice			
11/28	Temple			

Northern Illinois (SU: 2-6, ATS: 2-6, O/U: 2-6)				
Date	Opponent	Line Score	ATS/O/U	
8/30	Holy Cross	-13' 19-17 L	u49'	
9/5	at Maryland	+16' 9-13 W	u45'	
9/13				
9/20	at Mississippi St	+24 10-38 L	u48'	
9/27	San Diego State	+2' 3-6 L	u41'	
10/4	Miami (OH)	+4' 14-25 L	o38'	
10/11	at Eastern Mich	-1' 10-16 L	u48'	
10/18	at Ohio	+10' 21-48 L	o42'	
10/25	Ball State	-6' 21-7 W	u40'	
11/1				
11/5	at Toledo			
11/12	at Massachusetts			
11/18	Western Michigan			
11/28	Kent State			

Northwestern (SU: 5-3, ATS: 5-2-1, O/U: 3-5)				
Date	Opponent	Line Score	ATS/O/U	
8/30	at Tulane	+6 3-23 L	u45'	
9/5	Western Illinois	-31' 42-7 W	o48'	
9/11	Oregon	+24' 14-34 W	u50'	
9/20				
9/27	UCLA	-6 17-14 L	u46'	
10/4	UL-Monroe	-13 42-7 W	o43'	
10/11	at Penn State	+20' 22-21 W	u46'	
10/18	Purdue	-3 19-0 W	u47'	
10/25	at Nebraska	+7 21-28 P	o60'	
11/1				
11/7	at USC			
11/15	Michigan			
11/22	Minnesota			
11/29	at Illinois			

Notre Dame (SU: 6-2, ATS: 3-5, O/U: 4-4)				
Date	Opponent	Line Score	ATS/O/U	
8/31	at Miami (FL)	-3 24-27 L	o50'	
9/6				
9/13	Texas A&M	-6' 40-41 L	o49'	
9/20	Purdue	-24' 56-30 W	o51'	
9/27	at Arkansas	-5' 56-13 W	o63'	
10/4	Boise State	-21' 28-7 L	u62'	
10/11	NC State	-24 36-7 W	u59'	
10/18	USC	-10' 34-24 L	u60'	
10/25				
11/1	at Boston College	-31 25-10 L	u55'	
11/8	Navy			
11/15	at Pittsburgh			
11/22	Syracuse			
11/29	at Stanford			

Ohio (SU: 5-3, ATS: 4-3-1, O/U: 4-4)				
Date	Opponent	Line Score	ATS/O/U	
8/28	at Rutgers	+15' 31-34 W	o52'	
9/6	West Virginia	+3' 17-10 W	u58'	
9/13	at Ohio State	+28 9-37 P	u49'	
9/20	Gardner-Webb	-30' 52-35 L	o56'	
9/27	Bowling Green	-7' 35-20 W	o50'	
10/4	at Ball State	-14 14-20 L	u52'	
10/11				
10/18	Northern Illinois	-10' 48-21 W	o42'	
10/25	at Eastern Mich	-12' 28-21 L	u60'	
11/1				
11/4	Miami (OH)			
11/11	at Western Michigan			
11/18	Massachusetts			
11/28	at Buffalo			

Ohio State (SU: 8-0, ATS: 7-0-1, O/U: 3-5)				
Date	Opponent	Line Score	ATS/O/U	
8/30	Texas	-1' 14-7 W	u46'	
9/6	Grambling State	-54' 70-0 W	o62'	
9/13	Ohio	-28 37-9 P	u49'	
9/20				
9/27	at Washington	-9' 24-6 W	u53'	
10/4	Minnesota	-23' 42-3 W	o42'	
10/11	at Illinois	-14' 34-16 W	u51'	
10/18	at Wisconsin	-25 34-0 W	u41'	
10/25				
11/1	Penn State	-17' 38-14 W	o45'	
11/8	at Purdue			
11/15	UCLA			
11/22	Rutgers			
11/29	at Michigan			

Oklahoma (SU: 7-2, ATS: 5-4, O/U: 2-7)				
Date	Opponent	Line Score	ATS/O/U	
8/30	Illinois State	-40' 35-3 L	u60'	
9/6	Michigan	-4 24-13 W	u46'	
9/13	at Temple	-24 42-3 W	u50'	
9/20	Auburn	-6' 21-17 W	u47'	
9/27				
10/4	Kent State	-46' 44-0 L	u53'	
10/11	† Texas	+2' 6-23 L	u44'	
10/18	at South Carolina	-4' 26-7 W	u42'	
10/25	Ole Miss	-4' 26-34 L	o52'	
11/1	at Tennessee	+3 33-27 W	o55'	
11/8				
11/15	at Alabama			
11/22	Missouri			
11/29	LSU			

Oklahoma State (SU: 1-8, ATS: 2-7, O/U: 5-4)				
Date	Opponent	Line Score	ATS/O/U	
8/28	UT-Martin	-26' 27-7 L	u56'	
9/6	at Oregon	+28' 3-69 L	o55'	
9/13				
9/19	Tulsa	-10 12-19 L	u54'	
9/27	Baylor	+21 27-45 W	o58'	
10/4	at Arizona	+21' 13-41 L	u57'	
10/11	Houston	+14' 17-39 L	u47'	
10/18	Cincinnati	+23' 17-49 L	o58'	
10/25	at Texas Tech	+37' 0-42 L	u56'	
11/1	at Kansas	+24' 21-38 W	o55'	
11/8				
11/15	Kansas State			
11/22	at UCF			
11/29	Iowa State			

Old Dominion (SU: 6-3, ATS: 5-4, O/U: 5-4)				
Date	Opponent	Line Score	ATS/O/U	
8/30	at Indiana	+23' 14-27 W	u53'	
9/6	NC Central	-21' 54-6 W	o50'	
9/13	at Virginia Tech	+5' 45-26 W	o51'	
9/20				
9/27	Liberty	-14' 21-7 L	u53'	
10/4	Coastal Carolina	-18' 47-7 W	o53'	
10/11	at Marshall	-14' 24-48 L	o57'	
10/18	at James Madison	+3 27-63 L	o47'	
10/25	Appalachian St	-13' 24-21 L	u62'	
11/1	at UL-Monroe	-17 31-6 W	u55'	
11/8				
11/13	Troy			
11/22	at Georgia Southern			
11/29	Georgia State			

Ole Miss (SU: 8-1, ATS: 6-3, O/U: 5-4)				
Date	Opponent	Line Score	ATS/O/U	
8/30	Georgia State	-33' 63-7 W	o60'	
9/6	at Kentucky	-8 30-23 L	o51'	
9/13	Arkansas	-3' 41-35 W	o56'	
9/20	Tulane	-11' 45-10 W	u61'	
9/27	LSU	-2' 24-19 W	u58'	
10/4				
10/11	Washington St	-33 24-21 L	u58'	
10/18	at Georgia	+7 35-43 L	u56'	
10/25	at Oklahoma	+4' 34-26 W	o52'	
11/1	at South Carolina	-12' 30-14 W	u55'	
11/8	The Citadel			
11/15	Florida			
11/22				
11/29	at Mississippi State			

Oregon (SU: 7-1, ATS: 5-3, O/U: 4-4)				
Date	Opponent	Line Score	ATS/O/U	
8/30	Montana State	-29' 59-13 W	o56'	
9/6	Oklahoma State	-28' 69-3 W	o55'	
9/13	at Northwestern	-24' 34-14 L	u50'	
9/20	Oregon State	-33 41-7 W	u58'	
9/27	at Penn State-2ot	+4 30-24 W	o52'	
10/4				
10/11	Indiana	-7 20-30 L	u51'	
10/18	at Rutgers	-18 56-10 W	o62'	
10/25	Wisconsin	-31' 21-7 L	u44'	
11/1				
11/8	at Iowa			
11/14	Minnesota			
11/22	USC			
11/29	at Washington			

**Texas (SU: 7-2, ATS: 2-7, O/U: 4-5)**

Date	Opponent	Line	Score	ATS/O/U
8/30	at Ohio State	+1'	7-14 L	u46'
9/6	San Jose State	-36'	38-7 L	u52'
9/13	UTEP	-39	27-10 L	u52
9/20	Sam Houston St	-39'	55-0 W	o51
9/27				
10/4	at Florida	-4'	21-29 L	u44'
10/11	† Oklahoma	-2'	23-6 W	u42'
10/18	at Kentucky-ot	-12	16-13 L	u45'
10/25	at Miss St-ot	-8	45-38 L	o49
11/1	Vanderbilt	-3'	34-31 L	o48
11/8				
11/15	at Georgia			
11/22	Arkansas			
11/29	Texas A&M			

**Texas A&M (SU: 8-0, ATS: 4-4, O/U: 6-2)**

Date	Opponent	Line	Score	ATS/O/U
8/30	UTSA	-23'	42-24 L	o58'
9/6	Utah State	-34'	44-22 L	o57'
9/13	at Notre Dame	+6'	41-40 W	o49'
9/20				
9/27	Auburn	-6'	16-10 L	u51'
10/4	Mississippi State	-17'	31-9 W	u57'
10/11	Florida	-7	34-17 W	o48
10/18	at Arkansas	-7'	45-42 L	o57'
10/25	at LSU	-1'	49-25 W	o50'
11/1				
11/8	at Missouri			
11/15	South Carolina			
11/22	Samford			
11/29	at Texas			

**Texas State (SU: 3-5, ATS: 2-6, O/U: 5-3)**

Date	Opponent	Line	Score	ATS/O/U
8/30	Eastern Michigan	-14	52-27 W	o56'
9/6	at UTSA	+4'	43-36 W	o64'
9/13	at Arizona State	+18'	15-34 L	u61
9/20	Nicholls State	-32'	35-3 L	u57
9/27				
10/4	at Arkansas State	-14	30-31 L	u64
10/11	Troy-ot	-7'	41-48 L	o53'
10/18	at Marshall-2ot	-2'	37-40 L	o65'
10/25				
10/28	James Madison	+7	20-52 L	o55'
11/8	at UL-Lafayette			
11/15	at Southern Miss			
11/22	UL-Monroe			
11/29	South Alabama			

**Texas Tech (SU: 8-1, ATS: 8-1, O/U: 4-5)**

Date	Opponent	Line	Score	ATS/O/U
8/30	Ark Pine-Bluff	-54'	67-7 W	o62'
9/6	Kent State	-47'	62-14 W	o60
9/13	Oregon State	-24	45-14 W	u61
9/20	at Utah	+3	34-10 W	u58'
9/27				
10/4	at Houston	-13	35-11 W	u51'
10/11	Kansas	-13'	42-17 W	o58'
10/18	at Arizona State	-7'	22-26 L	u52'
10/25	Oklahoma State	-37'	42-0 W	u56'
11/1	at Kansas State	-7	43-20 W	o51'
11/8	BYU			
11/15	UCF			
11/22				
11/29	at West Virginia			

**Toledo (SU: 4-4, ATS: 5-3, O/U: 4-4)**

Date	Opponent	Line	Score	ATS/O/U
8/30	at Kentucky	+10	16-24 W	u49
9/6	W. Kentucky	-8	45-21 W	o57
9/13	Morgan State	-33'	60-0 W	o54
9/20	at Western Mich	-13'	13-14 L	u48'
9/27	Akron	-21'	45-3 W	u49'
10/4				
10/11	at Bowling Green	-11	23-28 L	o45'
10/18	Kent State	-25'	45-10 W	o48'
10/25	at Washington St	-2	7-28 L	u45
11/1				
11/5	Northern Illinois			
11/12	at Miami (OH)			
11/22	Ball State			
11/29	at Central Michigan			

**Troy (SU: 6-3, ATS: 6-3, O/U: 5-4)**

Date	Opponent	Line	Score	ATS/O/U
8/30	Nicholls State	-20	38-21 L	o48'
9/6	at Clemson	+31	16-27 W	u51'
9/13	Memphis	+4	7-28 L	u50'
9/20	at Buffalo	+5'	21-17 W	u43'
9/27				
10/4	South Alabama-ot	+2	31-24 W	o47
10/11	at Texas State-ot	+7'	48-41 W	o53'
10/18	at UL-Monroe	-4'	37-14 W	o46'
10/25	UL-Lafayette	-7	35-23 W	o47'
11/1	Arkansas State	-7'	10-23 L	u52'
11/8				
11/13	at Old Dominion			
11/22	Georgia State			
11/29	at Southern Miss			

**Tulane (SU: 6-2, ATS: 3-4-1, O/U: 3-5)**

Date	Opponent	Line	Score	ATS/O/U
8/30	Northwestern	-6	23-3 W	u45'
9/6	at South Alabama	-13'	33-31 L	o51
9/13	Duke	-1'	34-27 W	o52'
9/20	at Ole Miss	+11'	10-45 L	u61
9/27	at Tulsa	-14'	31-14 W	u52
10/4				
10/9	East Carolina	-7	26-19 P	u54
10/18	Army	-10	24-17 L	u44
10/25				
10/30	at UTSA	-6	26-48 L	o53'
11/1	at Memphis			
11/15	Florida Atlantic			
11/22	at Temple			
11/29	Charlotte			

**Tulsa (SU: 2-6, ATS: 4-4, O/U: 3-5)**

Date	Opponent	Line	Score	ATS/O/U
8/30	Abilene Christian	-5'	35-7 W	u59'
9/6	at New Mexico St	-3	14-21 L	u52'
9/13	Navy	+14	23-42 L	o52'
9/20	at Oklahoma St	+10	19-12 W	u54'
9/27	Tulane	+14'	14-31 L	u52
10/4	at Memphis	+20'	7-45 L	u55
10/11				
10/16	at East Carolina	+16'	27-41 W	o55
10/25	Temple-ot	+5	37-38 W	o52'
11/1				
11/8	at Florida Atlantic			
11/15	Oregon State			
11/22	at Army			
11/29	UAB			

**UAB (SU: 3-5, ATS: 3-5, O/U: 5-3)**

Date	Opponent	Line	Score	ATS/O/U
8/28	Alabama State	-21'	52-42 L	o53'
9/6	at Navy	+20'	24-38 W	o59
9/13	Akron	-12	31-28 L	u58
9/20	at Tennessee	+39	24-56 W	o69
9/27				
10/4	Army	+6'	13-31 L	u56
10/11	at Florida Atlantic	+5	33-55 L	u56'
10/18	Memphis	+23'	31-24 W	o69'
10/25				
11/1	at Connecticut	+10'	19-38 L	u61'
11/8	at Rice			
11/15	North Texas			
11/22	USF			
11/29	at Tulsa			

**UCF (SU: 4-4, ATS: 4-4, O/U: 3-5)**

Date	Opponent	Line	Score	ATS/O/U
8/28	Jacksonville St	-20'	17-10 L	u51'
9/6	NCA&T	-37'	68-7 W	o53'
9/13				
9/20	North Carolina	-7	34-9 W	u46'
9/27	at Kansas State	+6	20-34 L	u49
10/4	Kansas	+4	20-27 L	u54
10/11	at Cincinnati	+10	11-20 W	u56
10/18	West Virginia	-6'	45-13 W	o47
10/25				
11/1	at Baylor	+3	3-30 L	u58
11/7	Houston			
11/15	at Texas Tech			
11/22	Oklahoma State			
11/29	at BYU			

**UCLA (SU: 3-5, ATS: 3-5, O/U: 3-5)**

Date	Opponent	Line	Score	ATS/O/U
8/30	Utah	+6'	10-43 L	o48'
9/6	at UNLV	-2'	23-30 L	u54
9/12	New Mexico	-15'	10-35 L	u53
9/20				
9/27	at Northwestern	+6	14-17 W	u46
10/4	Penn State	+24'	42-37 W	o48'
10/11	at Michigan St	-7	38-13 L	u51'
10/18	Maryland	-3'	20-17 L	u52'
10/25	at Indiana	+26'	6-56 L	o53
11/1				
11/8	Nebraska			
11/15	at Ohio State			
11/22	Washington			
11/29	at USC			

**UL-Lafayette (SU: 3-6, ATS: 4-5, O/U: 5-4)**

Date	Opponent	Line	Score	ATS/O/U
8/30	Rice	-10	12-14 L	u48
9/6	McNeese State	-19	34-10 W	u50
9/13	at Missouri	+27	10-52 L	o47
9/20	at Eastern Mich	-2'	31-34 L	o51
9/27	Marshall-2ot	+2'	54-51 W	o48
10/4				
10/11	at James Madison	+18'	14-24 W	u45
10/18	Southern Miss	+5	10-22 L	u54'
10/25	at Troy	+7	23-35 L	u47
11/1	at South Alabama	+4	31-22 W	o52'
11/8	Texas State			
11/15				
11/20	at Arkansas State			
11/29	UL-Monroe			

**UL-Monroe (SU: 3-6, ATS: 2-7, O/U: 5-4)**

Date	Opponent	Line	Score	ATS/O/U
8/28	St. Francis (PA)	-30'	29-0 L	u47'
9/6	at Alabama	+34'	0-73 L	o49
9/13				
9/20	at UTEP	+6	31-25 W	u47
9/27	Arkansas State	-1'	28-16 W	o55'
10/4	at Northwestern	+13	7-42 L	o43
10/11	at Coa. Carolina	-2'	8-23 L	u46'
10/18	Troy	+4'	14-37 L	u46'
10/25	at Southern Miss	+14	21-49 L	o49'
11/1	Old Dominion	+17	6-31 L	u55'
11/8				
11/15	South Alabama			
11/22	at Texas State			
11/29	at UL-Lafayette			

**UNLV (SU: 6-2, ATS: 4-4, O/U: 5-3)**

Date	Opponent	Line	Score	ATS/O/U
8/23	Idaho State	-30'	38-31 L	o68
8/29	at Sam Hou. St	-9	38-21 W	u60
9/6	UCLA	+2'	30-23 W	u54
9/13				
9/20	at Miami (OH)	-1'	41-38 W	o49'
9/27				
10/4	at Wyoming	-4'	31-17 W	u51
10/11	Air Force	-6'	51-48 L	o65'
10/18	at Boise State	+13	31-56 L	o60
10/25				
11/1	New Mexico	-4	35-40 L	o61
11/8	at Colorado State			
11/15	Utah State			
11/21	Hawaii			
11/29	at Nevada			

**USC (SU: 6-2, ATS: 4-4, O/U: 4-4)**

Date	Opponent	Line	Score	ATS/O/U
8/30	Missouri State	-36'	73-13 W	o60
9/6	Georgia Southern	-29	59-20 W	o62
9/13	at Purdue	-20'	33-17 L	u59'
9/20	Michigan State	-18'	45-31 L	o55'
9/27	at Illinois	-6'	32-34 L	o61
10/4				
10/11	Michigan	-3	31-13 W	u58'
10/18	at Notre Dame	+10'	24-34 W	u60'
10/25				
11/1	at Nebraska	-4'	21-17 L	u59'
11/7	Northwestern			
11/15	Iowa			
11/22	at Oregon			
11/29	UCLA			

**USF (SU: 6-2, ATS: 5-2-1, O/U: 5-3)**

Date	Opponent	Line	Score	ATS/O/U
8/28	Boise State	+4'	34-7 W	u61
9/6	at Miami	+18	18-16 W	u57'
9/13	at Florida (FL)	+17	12-49 L	o56'
9/20	South Carolina St	-35'	63-14 W	o58'
9/27				
10/3	Charlotte	-28	54-26 P	o54'
10/10	at North Texas	+2'	63-36 W	u57'
10/18	Florida Atlantic	-20'	48-13 W	o62
10/25	at Memphis	-3'	31-34 L	o59
11/1				
11/6	UTSA			
11/15	at Navy			
11/22	at UAB			
11/29	Rice			

**Utah (SU: 7-2, ATS: 7-2, O/U: 6-3)**

Date	Opponent	Line	Score	ATS/O/U
8/30	at UCLA	-6'	43-10 W	o48'
9/6	Cal Poly	-42'	63-9 W	o53'
9/13	at Wyoming	-24	31-6 W	u47'
9/20	Texas Tech	-3	10-34 L	u57
9/27	at West Virginia	-13'	48-14 W	o48'
10/4				
10/11	Arizona State	-9'	42-10 W	o42'
10/18	at BYU	-4'	21-24 L	u49
10/25	Colorado	-14	53-7 W	o50'
11/1	Cincinnati	-11	45-14 W	o57'
11/8				
11/15	at Baylor			
11/22	Kansas State			
11/28	at Kansas			

**Utah State (SIU-A-A ATS-6.2 O/U-A)**



# BP SPORTS 2025 FOOTBALL PACKAGES

Item:	Regular:	Sale:
2025 CFB Preview (Win Totals, Futures)	\$50	\$10
2025 Newsletter (Includes Writeups)	\$100	\$30
2025 VIP Service (CFB/NFL Best Bets)	\$749	\$299

**Should I sign up for the Newsletter or VIP?**

	NL	VIP
Bet less than 10 games each week	✓	
\$100 or less per bet	✓	
Can only bet on Gamedays	✓	
One Update Sent Each Week	✓	
Bet more than 10 games each week		✓
\$250 or more per bet		✓
Can bet early in the week		✓
Daily updates via Email/Text		✓

## WEEKLY NEWSLETTER

- Emailed every Wednesday during the season
- Write-ups on every CFB/NFL game each week
- ATS Trends • Bad Beats • Misleading Finals
- Major Injuries • CFB Power Ratings on all teams
- ATS Schedule Logs for every CFB/NFL team
- Computer Projected Lines for Every CFB Game
- Will Include Score Projections but will NOT include Best Bets (VIP Only)

## 2025 CFB PREVIEW

- Emailed in Mid-July
- Team-By-Team 2025 Projections
- Brad Powers' Vegas Power Ratings
- Projected Lines on Every Game
- Season Win Total Projections & Best Bets
- Pointsread Value for Starting QB's
- Heisman, Conference & Title Future Bets
- Game of Year & Week 1 Best Bets

order online at [bradpowerssports.com](https://bradpowerssports.com)